



City of Lake Geneva, 626 Geneva St, Lake Geneva, WI 53147-262.248.3673-[www.cityoflakgeneva.gov](http://www.cityoflakgeneva.gov)

---

Piers, Harbors, and Lakefront Committee Agenda  
Tuesday, April 14, 2026 - 5:00 PM  
Lake Geneva City Hall; Council Chambers

Members:

Chair: Cindy Yager

Sherri Ames, Linda Frame, Brian Smith, and Cathy Stoodley

1. Call to Order
2. Roll Call
3. Comments from the public limited to 5 minutes, limited to items on this agenda
4. Approval of the minutes from February 10, 2026
5. Harbormaster Report
6. Presentation regarding Wake Enhanced Sports, AIS Signage, and ECOLI Signage - GLEA
7. Presentation regarding Police Boat Placement at West End Pier
8. Discussion/Recommendation regarding revised Water Safety Contract
9. Discussion/Recommendation regarding the Lakefront Budget
10. Adjournment

A quorum of the Council may be present; however, no official Council action will be taken.  
Requests from persons with disabilities who need assistance to participate in this meeting should be made to the City Clerk's office in advance so that the appropriate accommodations can be made.

**City Of Lake Geneva Piers, Harbors, And Lakefront Committee Minutes  
Tuesday, February 10, 2026 - 5:00 PM  
Lake Geneva City Hall; Council Chambers**

**Call to Order**

by Chairperson Yager at 5:00 pm.

**Roll Call**

Present: Cynthia Yager, Sherri Ames, Linda Frame, Brian Smith and Cathy Stoodley. Absent: None. Others present: City Clerk Lacey L. Reynolds, Harbormaster Erick Nicia (via zoom), Mayor Todd Krause, Lt. Katie Tietz, City Administrator Dave De Angelis, Parks Director David Winger, Deanna Goodwin -VISIT LG and other interested persons.

**Comments from the public limited to 5 minutes, limited to items on this agenda**

John Walker, Jennifer Ahrens, Al Bosworth, Kevin Klemke all spoke in regard to item 7.

Alder Ames made a motion to move item 7 up after item 4. There was no second to the motion.

**Approval of the minutes from January 13, 2026 Regular Meeting and January 20, 2026 Joint Meeting**

Motion by Stoodley to approve, second by Smith. Voice vote, approved, motion carried.

**Harbormaster Report**

Harbormaster Nicia reviewed his report.

**Discussion/Recommendation regarding city beach bracelets with QR code (returned to PHL from Common Council meeting 1/12/26)**

Harbormaster Nicia reviewed the timeline of this item, the updates made and the partners involved. Motion by Frame to suspend the rules for Deanna from Visit Lake Geneva to speak, second by Ames. Voice vote, approved, motion carried. Motion by Smith to approve, second by Stoodley. Voice vote, 4-approved, 1-opposed (Ames), motion carried.

**Discussion/Recommendation about location of Police Boat on West End Pier or other options**

Chairperson Yager reported that discussion had taken place about the location of the police boat and it is on the agenda so the committee and residents can have input. Motion by Frame to suspend the rules for Lt. Tietz to speak, second by Smith. Voice vote, approved, motion carried. Lt. Tietz addressed concerns raised during public comment and answered questions from the committee. Discussion took place. Motion by Ames to continue, second by Frame. Voice vote, approved, motion carried.

**Adjournment**

Motion by Ames to adjourn, second by Stoodley. Voice vote, approved, motion carried. Adjourned at 6:03 pm.

Lacey L. Reynolds  
City Clerk

**Harbormaster Report**  
**Tuesday April 14<sup>th</sup>, 2025**  
**Piers, Harbor & Lakefront Committee**  
Harbormaster Luke Riesterer, City of Lake Geneva

On 3/23/2026 Luke Riesterer started as the new Harbormaster for the City of Lake Geneva.

Over the past month Luke, David, and Steve Russell have been working to finalize leases for buoys, kayaks, slips, and work with Gage on repairs. Steve has been an invaluable resource, and we are very appreciative that he agreed to help during the transition.

We are also beginning the hiring process for Lakefront seasonal staff and have been undergoing interviews and have many more this week.

## **Welcome, Luke:**

Originally from Zion, IL, Luke has been involved around the water his entire life. He began as a competitive swimmer at 5y/o, Junior lifeguard at 7, SCUBA certified at 13, Lifeguard at 15, swim instructor at 16 and PADI Divemaster at 18.

Luke continued his love for the water into his higher education studying Ocean Engineering at Florida Institute of Technology and obtaining a B.S. in Aquatics from Ball State University. He continued into his profession with jobs in the aquatics and recreation field for municipalities, private companies as well as school districts.

When not working Luke enjoys surfing and volunteering with adaptive programs (especially water ones).

## **CORP & Lakefront Plan Update:**

The Joint PHL and Parks Committee voted to recommend the hiring of Vandewalle and their subconsultants to complete the work required in the CORP and Lakefront Plan. We are now looking to get a few possible dates in early May for the kickoff meeting and data gathering meetings. Below is a rough outline:

### **Day 1**

1. Staff Kickoff Meeting with Park, DPW, other staff as needed
  - a. Review schedule, initial steps, data, roles, communications
2. Park Site Visit
3. Lakefront Site Visit
4. Lunch break
5. Parks Work Session with Parks and DPW staff to review findings
6. **Joint Park Board and PHL Kickoff Meeting**

### **Day 2**

1. Lakefront Work Session with City staff to review initial findings, determine additional data needs, and discuss opportunities

**Harbormaster Report**  
**Tuesday April 14<sup>th</sup>, 2025**  
**Piers, Harbor & Lakefront Committee**  
Harbormaster Luke Riesterer, City of Lake Geneva

2. Bill Clevenger: Site visit to Lake Geneva Family YMCA, City parks, and lakefront to evaluate existing conditions and gain an on-the-ground understanding of the existing recreation system.
3. Parks Dept Work session with City staff to discuss organization of the transition to a dedicated Parks Department, determine additional data needs, and discuss needed resources.
4. Boater Focus Group Meetings

What I am looking for from this group is a listing of 3-5 dates and times that we could all meet in early May. I have May 5<sup>th</sup> as an option, let's discuss what other dates might work as well.



## Geneva Lake Environmental Agency

Village of Fontana - Village of Williams Bay - City of Lake Geneva - Town of Linn - Town of Walworth  
Phone: 262.245.4532 Fax: 262.245.4533 Email: info@gleawi.org Website: www.gleawi.org  
105 N Elkhorn Rd., P.O. Box 914, Williams Bay, WI 53191

# Recommendation on Wake-Enhanced Sports on Geneva Lake for Ecological Protection

Date: March 2026

---

## Purpose

This recommendation outlines the growing ecological concerns surrounding wake-enhanced water sports on Wisconsin's inland lakes and recommends policy action by municipalities around Geneva Lake to help preserve shoreline integrity, water quality, and public safety.

---

## Background

Wake enhanced enabled boats or larger boats can create large wave action reaching to the bottom of the lake when recreating in water depths under 30 feet. Wake enhanced boats are often 22 to 26 feet in length and are specifically designed or modified to create large, powerful wakes for sports like wakesurfing and wakeboarding. These boats often rely on **ballast tanks**, **hydrofoils**, and **trim tabs** to generate significant wave energy, increasing the environmental and safety risks far beyond that of traditional recreational boats.

These wakes:

- Accelerate **shoreline erosion**, even hundreds of feet from shore
- Disrupt **aquatic vegetation**, **fish spawning areas**, and **benthic habitat**
- Resuspend **nutrient-rich sediments**, contributing to harmful algae blooms
- Pose safety concerns to **kayakers**, **paddleboarders**, **swimmers**, and small watercraft
- Spread **aquatic invasive species** through unemptied and unsanitized ballast systems

**Ballast tanks**, which can hold hundreds to thousands of pounds of water, are one of the key contributors. They can also harbor and transfer **invasive species** like zebra mussel larvae or spiny water fleas, if not fully drained and disinfected between lake visits, causing other issues to the lake.

Aftermarket **wake-enhancing devices** (such as wave plates or ballast bags) further intensify wave size, often without boaters being fully aware of the extended reach or impact of their wake. With Geneva Lake's increasing popularity, these impacts are growing more visible and more frequent.

---

## State and Local Developments

Legislative Efforts:

- **SB 1024 (2026):** would require wake-enhanced boating to be done **≥500 ft from shore**, in **≥20 ft of water**, and **explicitly preserves local government authority** to enact stronger lake protections (with civil immunity for enforcement).
- **AB 1033 / SB 1025 (2026):** would set a **~200–300 ft shoreline setback** for wakesurfing but **has no minimum depth requirement or strong local control protections**.

### Local Ordinances:

- The Town of Presque Isle banned wake-enhancing equipment on 70 lakes.
- Oneida, Bayfield, and Jefferson Counties passed advisory resolutions recommending shoreline setbacks (500–700 feet) and depth minimums (30 feet).
- Town of Ottawa lakes (Hunters, Pretty, School Section), Waukesha County: Prohibit using equipment to enhance wakes and operate boat in artificially bow-high manner.
- Town of Norway lakes (Long, Waubeesee, Wind), Racine County: Prohibit wake surfing (riding wake without rope connection to boat).
- Ten other lakes within Waukesha, Racine, and Washington County are working on recommendations.

## Wake Sports Reform Coalition

Formed in 2024, the Wakesports Reform Coalition comprised of 76 member groups, including: Last Wilderness Alliance, Walleyes for Tomorrow, Wisconsin's Green Fire, Wisconsin Lakes, Wisconsin Wildlife Federation, and more, has supported a statewide rule requiring wake-enhanced boating to occur:

- At least 700 feet from shore
- More than 500 feet from other boats or lake users
- In water at least 30 feet deep
- With boats fully emptied and sanitized before launching to prevent the spread of aquatic invasive species

## GLEA Recommendation

In partnership with the Southeastern Wisconsin Regional Planning Commission (SEWRPC), the Geneva Lake Environmental Agency (GLEA) has reviewed local lake data and statewide trends.

Based on the majority of what other lakes across the state are doing and weighing the ecological impact, GLEA recommends:

**Wake-enhanced and surf boating shall occur no closer than 500 feet from shore and only in areas where the lake is at least 30 feet deep.**

This recommendation helps:

- Preserve Geneva Lake's ecological health
- Reduce shoreline erosion
- Limit nutrient disturbance and algae risk
- Improve safety for non-motorized users and swimmers

## Call to Action for Municipalities Around Geneva Lake

**To ensure consistent and science-based protections across Geneva Lake, GLEA urges surrounding municipalities at this point in time to help communicate the recommendation.**

Then in the future to possibly:

- 1. Adopt a Uniform Local Ordinance**  
Require wake-enhanced boating to follow the recommended 500-foot/30-foot standard.
- 2. Coordinate with Enforcement Partners**  
Work with water patrol to support education, compliance, and public safety.
- 3. Launch Public Awareness Campaigns**  
Incorporate wake boat guidance into pier permitting packets, newsletters, boat launch signage, and association communications.
- 4. Engage Regionally**  
Collaborate with Walworth County and other lakefront municipalities for a cohesive lake-wide policy.

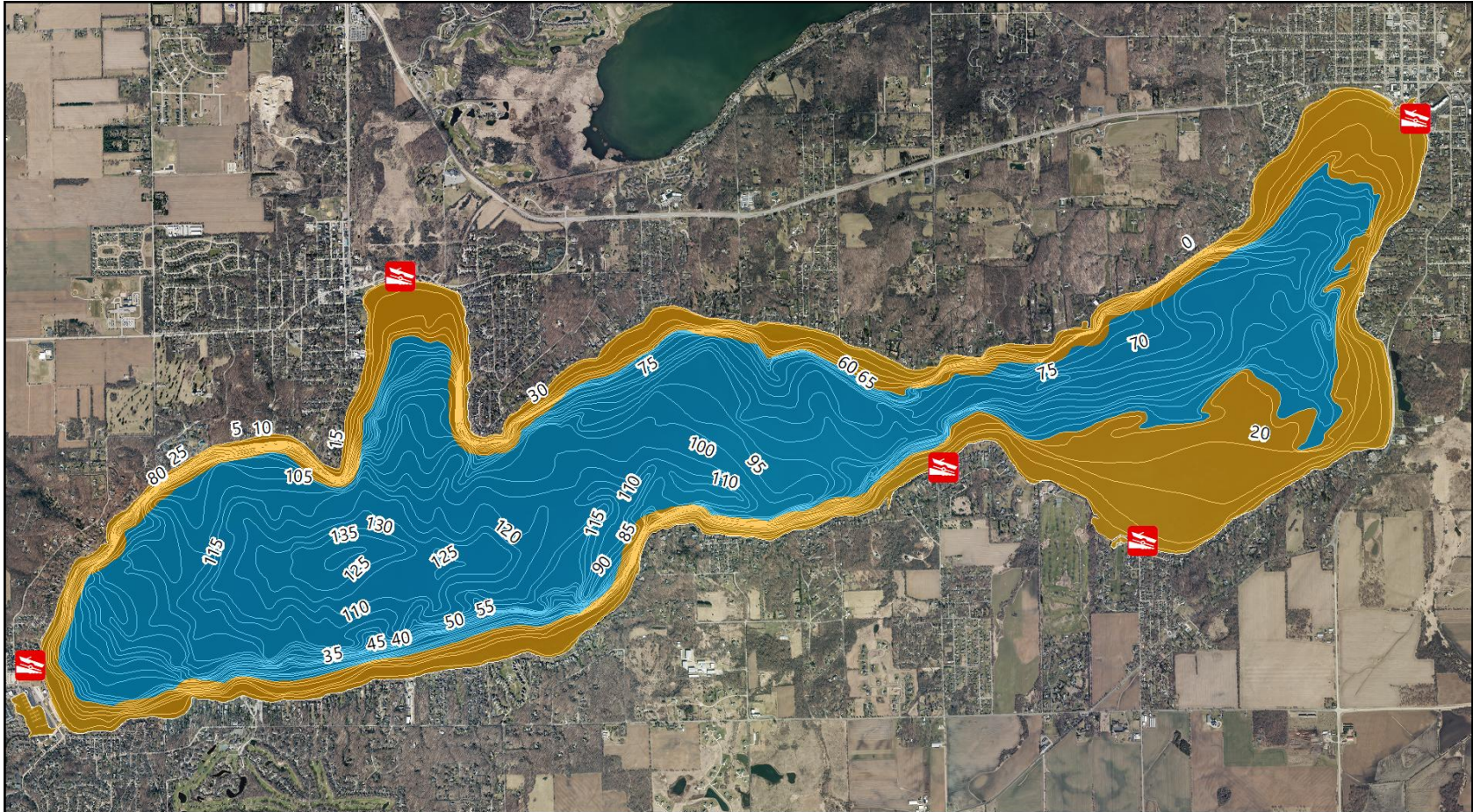
**Contact and Support:** GLEA is ready to assist with ordinance templates, education materials, and signage. Contact: [director@gleawi.org](mailto:director@gleawi.org), or call (262) 683-2067

### Proposed Signage:



**Attachment: Map of Geneva Lake and recommended wake enhanced zone**

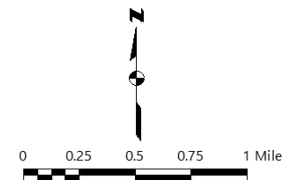
**Recommended Area for Wake-Enhanced Boating on Geneva Lake: 500' from Shore and 30' Deep**



- OVER 500' FROM SHORE AND OVER 30' DEEP (3,482 ACRES)
- LESS THAN OR EQUAL TO 500' FROM SHORE OR 30' DEEP (1,955 ACRES)
- BATHYMETRIC LINE
- PUBLIC BOAT LAUNCH

Note: Date of Aerial Photography: 2024

Source: Wisconsin Department of Natural Resources and Southeastern Wisconsin Regional Planning Commission



## AIS Signage

Current signage at boat launches around the lake is often mounted high on light posts and positioned out of direct sightlines, making it easy for users to overlook critical Clean Boats Clean Waters messaging. For signage to be effective, it must be at eye level, prominent, and clearly visible where boaters are preparing to launch and load. Improved, highly visible signs would allow launch attendants to easily point to the guidance while engaging with users, reinforcing inspection, removal, and drainage practices in real time. Clear, accessible signage is a simple but essential tool to strengthen compliance and protect the lake from aquatic invasive species. GLEA will purchase movable sign bases and provide two AIS signs so that users at launches can see the signage as they enter and leave the lake.

Example of sign base and AIS sign below:



# NEW E. Coli Recommendations 2026

## Use the Highest Sample Within the Beach

Due to issue last year with a level of 144 and the average being at 84 for a beach, it's not accurate as that pocket of 144 can be moving around. Even though 144 is still below the cautionary level of 235, it is more accurate to post the highest measurement verses the average of 144.

This protects all municipalities from dilution effects in other areas, and posts and more accurate portrayal of e. coli levels. GLEA is also looking into other ways to test E. coli levels for more accurate results.

## After a Heavy Rainfall the Signs Go to Yellow for 24 Hours

Most elevated E. coli events are linked to:

- Heavy rainfall (24–48 hour window) – most common so recommend we change signs
- Large bird presence
- Stream inflows
- Resuspension during high winds

## New Signage



Swim at your own risk. Water quality conditions may change.  
Nadar bajo su propio riesgo. Las condiciones de la calidad del agua pueden cambiar.

-  **Do not swallow the water.**  
No tragar el agua.
-  **Wash hands before eating.**  
Lavar las manos antes de comer.
-  **Shower after swimming.**  
Ducharse después de nadar.



Swim at your own risk. Bacteria levels are moderately high.  
Nadar bajo su propio riesgo. Los niveles de bacterias son moderadamente altos.

-  **Do not swallow the water.**  
No tragar el agua.
-  **Wash hands before eating.**  
Lavar las manos antes de comer.
-  **Shower after swimming.**  
Ducharse después de nadar.





Bacteria levels are currently unsafe for swimming.  
Actualmente los niveles de bacterias no son seguros para nadar.

**DO NOT SWIM!**  
**¡NO NADAR!**



## New Signage System

Locked box with four slots in each box for beach signs: green, yellow, red, algae. Signs can be slid out, changed quickly, and all signs can then be kept in one location. No more having to unscrew a sign to change it.





**2026 LIFEGUARD SERVICE AGREEMENT**

**BETWEEN CITY OF LAKE GENEVA & WATER SAFETY PATROL**

THIS AGREEMENT made this 5<sup>th</sup> day of MARCH, 2026, by and between the **CITY OF LAKE GENEVA**, a municipal corporation, hereinafter "the City", and **WATER SAFETY PATROL**, a Wisconsin non-profit corporation, hereinafter "WSP".

**WITNESSETH:**

**1. SERVICE DESCRIPTION AND DATES OF SERVICE:**

WSP shall provide lifeguard services on the dates specified below for the City of Lake Geneva's Riviera Beach, located at 812 Wrigley Drive. For purposes of this Agreement, "weekends" are defined as Saturday through Sunday, unless otherwise specified.

**a. Early Season (Memorial Day Weekend)**

Dates: May 23–25

Staffing Levels: Three (3) lifeguards with overlapping shifts.

Hours of Coverage: 10:00 a.m. – 5:00 p.m.

**b. Regular Season**

Dates: May 30 – August 30

Staffing Levels:

Weekdays: Three (3) lifeguards with overlapping shifts.

Weekends & Holidays: Four (4) lifeguards with overlapping shifts.

Hours of Coverage:

June 13 – August 9: 9:30 a.m. – 6:00 p.m.

Before June 13 & after August 9: 10:00 a.m. – 5:00 p.m.

**c. Peak Season**

Dates: June 13 – August 2

Staffing Adjustment: An additional fifth (5th) lifeguard will be scheduled on weekends and holidays to accommodate increased attendance.

**d. Late Season (Labor Day Weekend)**

Dates: September 5–7

Staffing Levels: Three (3) lifeguards with overlapping shifts.

Hours of Coverage: 10:00 a.m. – 5:00 p.m.

**2. CERTIFICATION and CONTINUAL TRAINING**

- a. All WSP lifeguards working at Riviera Beach shall hold a valid certificate from the American Red Cross or other competent certifying authority that meets requirements equal to that of the American Red Cross. Certification shall include skills in lifeguarding, water rescue, extrications, first aid, CPR and AED.
- b. Emergency practice drills will be conducted at Riviera Beach on a regular basis as determined by WSP management. Drill dates and times to be communicated to the City's Harbormaster.

**3. CITY'S DUTIES and RESPONSIBILITIES**

- a. When lifeguards are not present, the City shall post a "swim at your own risk" sign.
- b. The City shall provide an equipment storage area and break area for lifeguards. Such areas shall be shared with City beach staff and shall not be exclusively reserved for WSP.
  - i. The City reserves the right to revoke or restrict use of the equipment storage and break areas in the event of misuse, or policy violations
- c. The City's Harbormaster and/or Riviera Beach Supervisor shall provide general operational oversight of beach activities and may monitor WSP lifeguard performance for purposes of ensuring compliance with this Agreement and maintaining safety of the premise. The City shall not exercise direct supervision or control over the manner and means by which WSP lifeguards perform their duties. All supervision, direction, evaluation, discipline, scheduling, and employment decisions regarding WSP personnel shall remain solely with WSP management.
  - i. Upon observation of misconduct or unsatisfactory job performance, the Harbormaster shall notify WSP management. WSP shall take appropriate corrective action.
  - ii. Upon determination that continued assignment is not in the City's best interest, the Harbormaster shall promptly notify WSP management. The City reserves the right to request removal of a lifeguard from assignment at Riviera Beach.
- d. In cases of hazardous, extreme or rainy weather conditions, the lifeguards may be dismissed at the discretion of WSP management. WSP management shall be notified when city staff are dismissed and will determine WSP lifeguard dismissal.
- e. In the event Riviera Beach is closed due to emergency, water quality or other hazards, WSP management will be notified by City Harbormaster.

**4. WSP DUTIES and RESPONSIBILITIES**

- a. WSP policies and procedures shall be provided to Harbormaster and the City's emergency medical services (EMS) prior to May 23.
- b. WSP shall submit to Harbormaster a weekly written report detailing lifeguard activities, including but not limited to medical responses, rescues, emergency

- activation, swim lesson participation and total staffing hours. WSP shall provide to the Harbormaster a copy of all incident reports submitted by lifeguard to the WSP.
- c. Lifeguards shall request EMS through Beach Supervisor for incidents that require EMS response. These incidents can include rescues, pull-outs, or significant injuries as outlined in WSP/EMS policies and procedures.
  - d. During emergencies, WSP lifeguards shall immediately defer treatment or lifesaving measures to City EMS upon EMS arrival on site.
  - e. WSP lifeguards are prohibited from using or possessing any unapproved communication devices, including personal cell phones, while on duty. Personal cell phones are authorized only for the Lead or Captain Lifeguard, or in specific circumstances with prior approval on a case-by-case basis.
  - f. WSP hereby agrees to indemnify, defend and hold harmless the City of Lake Geneva, its elected and appointed officials, officers, employees, agents, representatives and volunteers, and each of them, from and against any and all suits, actions, legal or administrative proceedings, claims, demands, damages, liabilities, interest, attorneys' fees, costs, and expenses of whatsoever kind or nature in any manner directly or indirectly caused, occasioned, or contributed to in whole or in part or claimed to be caused, occasioned, or contributed to in whole or in part, by reason of any act, omission, fault, or negligence, whether active or passive, of WSP or of anyone acting under its direction or control or on its behalf, even if liability is also sought to be imposed on the City of Lake Geneva, its elected and appointed officials, officers, employees, agents, representatives and volunteers. The obligation of WSP to indemnify, defend and hold harmless the City of Lake Geneva, its elected and appointed officials, officers, employees, agents, representatives and volunteers, and each of them, shall be applicable unless liability results from the sole negligence of the City of Lake Geneva, its elected and appointed officials, officers, employees, agents, representatives and volunteers.

## **5. INSURANCE REQUIREMENTS**

WSP shall maintain Commercial General Liability Insurance covering its operations under this Agreement, including bodily injury, personal injury, and property damage, with limits of not less than \$2,000,000.00

Coverage shall include contractual liability sufficient to cover the indemnification obligations set forth herein.

- a. The City of Lake Geneva, its officers, officials, employees, and agents shall be named as Additional Insureds on WSP's Commercial General Liability policy for operations performed under this Agreement.

- b. WSP shall provide a Certificate of Insurance to the City prior to May 23, 2026, evidencing required coverage. Coverage shall not be canceled or materially reduced without at least thirty (30) days' prior written notice to the City.

**6. INDEPENDENT CONTRACTOR STATUS**

It is explicitly understood and agreed that WSP's relationship with the City of Lake Geneva will be that of an independent contract, and nothing in this Service Agreement is intended to, or should be construed to, create a partnership, agency, joint venture, or employment relationship. WSP and its lifeguards, employees, volunteers, officers, directors or agents will not be entitled to any benefits that City of Lake Gene may make available to its employees, including but not limited to group health insurance, life insurance, disability insurance, profit-sharing, retirement benefits, paid vacation, holidays or sick leave, or worker's compensation insurance. No part of WSP's cost of services will be subject to withholding by City of Lake Geneva for social security, Medicare, federal, state or any other employee taxes. The City of Lake Geneva will regularly report to the IRS amounts paid to the WSP by filing a Form 1099-MISC with the Internal Revenue Service as required by law. The days and hours that services are provided are a term of this independent contract and not a condition of employment. WSP agrees to provide all tools and instrumentalities required to perform the services under this service agreement.

**7. BREACH of AGREEMENT**

If either party believes the other party has materially breached this Agreement, the non-breaching party shall provide written notice specifying the nature of the breach.

- a. The breaching party shall have ten (10) calendar days from receipt of written notice to cure the breach, unless the breach presents an immediate threat to public health or safety, in which case the Agreement may be suspended or terminated immediately.
- b. If the breach is not cured within the specified period or breach is an immediate threat to public health or safety, the non-breaching party may terminate this Agreement.

**8. COST OF SERVICES**

Lifeguard Services for above dates -----	\$29,898.00
Liability Insurance -----	\$3,885.00
Workman's Compensation -----	\$695.00
Uniforms -----	\$620.00
First-Aid Supplies -----	\$390.00

Lifeguard Service Agreement 2026

Swimming Lessons ----- \$4,380.00


Training and practice drills ----- \$1,890.00

**Total: \$41,758.00**

**Payment Due by June 1, 2026 (City is to use this document as invoice)**

IN WITNESS WHEREOF, the CITY OF LAKE GENEVA has caused this agreement to be executed by its Mayor, countersigned by the City Clerk and sealed with its corporate seal, and Water Safety Patrol has set its hand and seal, and both parties represent that each of the signers has full authority to execute the same.

**WATER SAFETY PATROL**

  
\_\_\_\_\_  
SIGNED: TED PANKAU, DIRECTOR  
3 1 5 /2026  
DATE

**CITY OF LAKE GENEVA**

\_\_\_\_\_  
SIGNED: TODD KRAUSE, MAYOR  
 / /2026  
DATE

COUNTER

\_\_\_\_\_  
SIGNED: LACEY REYNOLDS, CITY CLERK  
 / /2026  
DATE

Account Number	Account Title	2026-26 Period Actual	2026-26 Current year Actual	Current year Budget	Variance Current year	% of Budget
<b>LAKEFRONT FUND</b>						
<b>LAKEFRONT FUND</b>						
40-00-00-48110	INTEREST INCOME	15,603.75	15,603.75	75,000.00	59,396.25	20.81
40-00-00-49100	APPL. PRIOR YR APPROPRIATIONS	.00	.00	100,000.00	100,000.00	.00
Total LAKEFRONT FUND:		15,603.75	15,603.75	175,000.00	159,396.25	8.92
<b>BUOYS AND BOAT STALLS</b>						
40-52-10-46750	BUOY/BOAT STALL WAITING LIST	.00	.00	.00	.00	.00
40-52-10-46755	KAYAK WAITING LIST	10.00	15.00	50.00	35.00	30.00
40-52-10-46760	BUOY/STALL LATE FEES	375.00	375.00	400.00	25.00	93.75
40-52-10-46770	BUOY & SLIP LEASES-CITY	186,107.26	187,248.19	200,000.00	12,751.81	93.62
40-52-10-46780	KAYAK RACK SPACE RENTAL	8,034.23	8,034.23	8,500.00	465.77	94.52
40-52-10-47250	DONATIONS - LAKEFRONT	.00	.00	.00	.00	.00
Total BUOYS AND BOAT STALLS:		194,526.49	195,672.42	208,950.00	13,277.58	93.65
<b>BUOYS AND BOAT STALLS</b>						
40-52-10-51100	HARBORMASTER SALARY	3,072.36	6,445.42	.00	6,445.42-	.00
40-52-10-51200	PIERS WAGES	.00	.00	.00	.00	.00
40-52-10-51340	HARBOR LIFE INSURANCE	.00	.00	.00	.00	.00
40-52-10-51360	HARBOR RETIREMENT EXP	.00	216.62	.00	216.62-	.00
40-52-10-51520	HARBOR SOCIAL SECURITY	235.03	486.56	.00	486.56-	.00
40-52-10-52110	PIER MAINTENANCE CONTRACT	.00	.00	50,000.00	50,000.00	.00
40-52-10-52640	BUOYS & BOAT STALLS-REPAIRS	.00	.00	65,000.00	65,000.00	.00
40-52-10-53140	LIABILITY & PROPERTY INSURANCE	14,538.74	14,538.74	19,385.00	4,846.26	75.00
40-52-10-53510	EQUIP MAINT SUPP-BUOYS,STALLS	.00	.00	2,000.00	2,000.00	.00
40-52-10-53980	WEST PIER REPLACEMENT FUND	.00	.00	50,000.00	50,000.00	.00
40-52-10-53990	BUOY/STALL MISC. EXPENSES	777.50	777.50	2,500.00	1,722.50	31.10
Total BUOYS AND BOAT STALLS:		18,623.63	22,464.84	188,885.00	166,420.16	11.89
<b>BOAT LAUNCH</b>						
40-52-11-46000	LAUNCH RAMP OVERAGE/SHORTAGE	.00	.00	.00	.00	.00
40-52-11-46750	LAUNCH PASS FEES	1,099.53	1,699.06	8,000.00	6,300.94	21.24
40-52-11-46760	BOAT LAUNCH RAMP INCOME	.00	.00	22,000.00	22,000.00	.00
40-52-11-46770	KAYAK LAUNCH INCOME	.00	.00	500.00	500.00	.00
Total BOAT LAUNCH:		1,099.53	1,699.06	30,500.00	28,800.94	5.57
<b>BOAT LAUNCH</b>						
40-52-11-51200	LAUNCH RAMP WAGES	.00	.00	17,500.00	17,500.00	.00
40-52-11-51520	LAUNCH RAMP SOC SEC	.00	.00	1,339.00	1,339.00	.00
40-52-11-52520	LAUNCH RAMP REPAIRS	.00	.00	2,000.00	2,000.00	.00
40-52-11-53520	LAUNCH RAMP MAINT SUPPLIES	.00	.00	500.00	500.00	.00
40-52-11-53990	LAUNCH RAMP MISCELLANEOUS	21.90	21.90	500.00	478.10	4.38
Total BOAT LAUNCH:		21.90	21.90	21,839.00	21,817.10	.10
<b>BEACH</b>						
40-54-10-43660	DNR LAKE PATROL GRANT	.00	.00	.00	.00	.00
40-54-10-43670	CLEAN BOATS CLEAN WATER GRANT	.00	.00	2,400.00	2,400.00	.00
40-54-10-46100	MISC BEACH REVENUE	.00	.00	.00	.00	.00
40-54-10-46730	BEACH REVENUE	17.06	17.06	565,000.00	564,982.94	.00
40-54-10-46735	BEACH REVENUE-VIPLY	.00	.00	.00	.00	.00

Account Number	Account Title	2026-26 Period Actual	2026-26 Current year Actual	Current year Budget	Variance Current year	% of Budget
40-54-10-46740	BEACH PASS RESIDENTS	6,405.07	7,238.15	24,000.00	16,761.85	30.16
40-54-10-46750	BEACH PASS - SEASONAL	.00	.00	2,000.00	2,000.00	.00
Total BEACH:		6,422.13	7,255.21	593,400.00	586,144.79	1.22
<b>BEACH</b>						
40-54-10-51100	HARBORMASTER WAGES	4,259.34	4,259.34	82,032.00	77,772.66	5.19
40-54-10-51200	BEACH MTCE WAGES	102.04	102.04	6,200.00	6,097.96	1.65
40-54-10-51250	BEACH MTCE OVERTIME WAGES	.00	.00	8,000.00	8,000.00	.00
40-54-10-51260	BEACH SEASONAL WAGES	250.85	250.85	97,000.00	96,749.15	.26
40-54-10-51340	BEACH MTCE LIFE INS	.34	.34	74.00	73.66	.46
40-54-10-51345	BEACH MTCE HEALTH INSURANCE	.00	.00	34,176.00	34,176.00	.00
40-54-10-51350	BEACH MTCE DENTAL INSURANCE	3.14	3.14	1,641.00	1,637.86	.19
40-54-10-51355	BEACH MTCE VISION INSURANCE	.00	.00	110.00	110.00	.00
40-54-10-51360	BEACH MTCE RETIREMENT FUND	7.35	7.35	7,023.00	7,015.65	.10
40-54-10-51370	BEACH MTCE DISABILITY INS	.00	.00	189.00	189.00	.00
40-54-10-51380	UNIFORMS	.00	.00	2,000.00	2,000.00	.00
40-54-10-51520	BEACH SOCIAL SECURITY	352.85	352.85	14,883.00	14,530.15	2.37
40-54-10-52210	BEACH TELEPHONE	51.72	51.72	500.00	448.28	10.34
40-54-10-52220	BEACH ELECTRIC	684.42	960.11	4,700.00	3,739.89	20.43
40-54-10-52640	LAKE SPRAYING	.00	.00	5,000.00	5,000.00	.00
40-54-10-53100	BEACH OFFICE SUPPLIES	1,698.94	1,698.94	5,000.00	3,301.06	33.98
40-54-10-53130	WORKER'S COMPENSATION INS	.00	.00	4,500.00	4,500.00	.00
40-54-10-53140	LIABILITY & PROPERTY INSURANCE	.00	.00	10,000.00	10,000.00	.00
40-54-10-53400	CALE OPERATING AND CC EXP	.00	.00	20,000.00	20,000.00	.00
40-54-10-53520	BEACH MAINTENANCE SUPPLIES	.00	.00	5,000.00	5,000.00	.00
40-54-10-53620	BEACH MAINTENANCE SERVICE COS	.00	.00	2,500.00	2,500.00	.00
40-54-10-53720	BEACH DREDGING	.00	.00	.00	.00	.00
40-54-10-53990	BEACH MISCELLANEOUS	.00	144.79	3,000.00	2,855.21	4.83
40-54-10-57200	WATER SAFETY PATROL	.00	.00	41,758.00	41,758.00	.00
40-54-10-57210	GLAKE LAW ENFORCEMENT AGENCY	.00	.00	.00	.00	.00
40-54-10-57300	GLAKE ENVIRONMENTAL AGENCY	11,250.00	11,250.00	45,000.00	33,750.00	25.00
40-54-10-57350	GENEVA LAKE LEVEL CORP	.00	.00	4,000.00	4,000.00	.00
40-54-10-57800	VENETIAN FESTIVAL FIREWORKS	.00	.00	10,000.00	10,000.00	.00
40-54-10-58000	OUTLAY - BEACH EQUIPMENT	.00	.00	2,000.00	2,000.00	.00
Total BEACH:		18,660.99	19,081.47	416,286.00	397,204.53	4.58
<b>UPPER RIVIERA</b>						
40-55-10-46740	UPPER RIVIERA REVENUE	288,191.94	292,547.39	305,000.00	12,452.61	95.92
40-55-10-46750	UPPER RIVIERA CATERING REV	2,746.67	2,746.67	42,000.00	39,253.33	6.54
40-55-10-46760	UPPER RIVIERA MISC REVENUE	.00	.00	500.00	500.00	.00
Total UPPER RIVIERA:		290,938.61	295,294.06	347,500.00	52,205.94	84.98
<b>UPPER RIVIERA</b>						
40-55-10-51200	RIVIERA MTCE WAGES	18,087.32	21,032.92	77,457.00	56,424.08	27.15
40-55-10-51250	RIVIERA MTCE OVERTIME	1,164.27	1,371.39	9,500.00	8,128.61	14.44
40-55-10-51260	RIVIERA EVENT STAFF WAGES	1,722.42	1,722.42	22,000.00	20,277.58	7.83
40-55-10-51270	RIVIERA EVENT STAFF WAGES	.00	.00	.00	.00	.00
40-55-10-51340	RIVIERA MTCE LIFE INSURANCE	19.90	19.90	82.00	62.10	24.27
40-55-10-51345	RIVIERA MTCE HEALTH INSURANCE	5,470.86	5,470.86	26,063.00	20,592.14	20.99
40-55-10-51350	RIVIERA MTCE DENTAL INSURANCE	367.32	367.32	1,621.00	1,253.68	22.66
40-55-10-51355	RIVIERA MTCE VISION INSURANCE	.00	.00	5.00	5.00	.00
40-55-10-51360	RIVIERA MTCE RETIREMENT FUND	1,354.97	1,581.97	5,576.00	3,994.03	28.37
40-55-10-51370	RIVIERA MTCE DISABILITY INS	44.22	44.22	180.00	135.78	24.57

Account Number	Account Title	2026-26 Period Actual	2026-26 Current year Actual	Current year Budget	Variance Current year	% of Budget
40-55-10-51520	RIVIERA SOCIAL SECURITY	1,573.76	1,808.65	8,335.00	6,526.35	21.70
40-55-10-52210	TELEPHONE EXPENSE	568.99	568.99	1,500.00	931.01	37.93
40-55-10-52240	UPPER RIVIERA GAS HEAT	1,304.67	1,304.67	4,200.00	2,895.33	31.06
40-55-10-52260	UPPER RIV WATER & SEWER BILLS	.00	221.14	2,000.00	1,778.86	11.06
40-55-10-52400	UPPER RIVIERA REPAIRS	.00	.00	2,900.00	2,900.00	.00
40-55-10-53120	POSTAGE EXPENSE	.00	.00	.00	.00	.00
40-55-10-53160	PUBLICATIONS & PROMOTIONS	.00	.00	.00	.00	.00
40-55-10-53500	BLDG MAINT SUPPLIES-UPPER RIV	.00	.00	4,000.00	4,000.00	.00
40-55-10-53600	UPPER RIVIERA MAINTENANCE	4,878.56	4,878.56	9,200.00	4,321.44	53.03
Total UPPER RIVIERA:		36,557.26	40,393.01	174,619.00	134,225.99	23.13
<b>LOWER RIVIERA CONCOURSE</b>						
40-55-20-46790	RIVIERA CONCOURSE ELECTRIC	6,598.77	6,598.77	12,150.00	5,551.23	54.31
40-55-20-48200	RIVIERA CONCOURSE LEASES	.00	.00	120,172.00	120,172.00	.00
40-55-20-48230	RIVIERA PROMOTIONAL REVENUE	.00	.00	.00	.00	.00
40-55-20-48250	DONATIONS-FOUNTAIN	.00	3.75	1,350.00	1,346.25	.28
Total LOWER RIVIERA CONCOURSE:		6,598.77	6,602.52	133,672.00	127,069.48	4.94
<b>LOWER RIVIERA CONCOURSE</b>						
40-55-20-51200	LAKEFRONT SECURITY PD WAGES	73.56	283.51	36,000.00	35,716.49	.79
40-55-20-51520	LAKEFRONT SECURITY PD FICA	5.63	21.70	2,754.00	2,732.30	.79
40-55-20-52210	RIVIERA ELEVATOR PHONE EXPENSE	2,004.37	2,004.37	4,800.00	2,795.63	41.76
40-55-20-52260	LOWER RIV WATER & SEWER BILLS	.00	519.68	4,000.00	3,480.32	12.99
40-55-20-52400	LOWER RIVIERA REPAIRS	.00	.00	33,100.00	33,100.00	.00
40-55-20-53130	WORKERS COMP INSURANCE	.00	.00	2,000.00	2,000.00	.00
40-55-20-53140	LIABILITY & PROPERTY INSURANCE	.00	.00	9,450.00	9,450.00	.00
40-55-20-53500	BLDG MAINT SUPPLIES-LOWER RIV	833.66	833.66	8,000.00	7,166.34	10.42
40-55-20-53550	FOUNTAIN MAINT EXP	.00	.00	1,500.00	1,500.00	.00
40-55-20-53600	RIV MAINTENANCE SERVICE COSTS	4,568.96	4,568.96	15,000.00	10,431.04	30.46
40-55-20-53990	MISCELLANEOUS EXPENSES	201.98	201.98	500.00	298.02	40.40
40-55-20-58000	OUTLAY - RIVIERA EQUIPMENT	.00	.00	9,000.00	9,000.00	.00
40-55-20-59300	TRANSFER TO GENERAL FUND	.00	.00	771,534.00	771,534.00	.00
40-55-20-59350	TRANSFER TO CAPITAL PROJECTS	.00	.00	.00	.00	.00
Total LOWER RIVIERA CONCOURSE:		7,688.16	8,433.86	897,638.00	889,204.14	.94
<b>RIVIERA PIERS AND DOCKS</b>						
40-55-30-48210	RIVIERA DOCKS LEASES	.00	.00	160,105.00	160,105.00	.00
40-55-30-48220	BUOY & SLIP LEASES-RIVIERA	75,575.34	75,575.34	123,108.00	47,532.66	61.39
Total RIVIERA PIERS AND DOCKS:		75,575.34	75,575.34	283,213.00	207,637.66	26.68
<b>RIVIERA PIERS AND DOCKS</b>						
40-55-30-52220	PIER ELECTRIC	9,363.43	12,512.14	35,000.00	22,487.86	35.75
40-55-30-52640	PIER REPAIRS	.00	.00	45,000.00	45,000.00	.00
Total RIVIERA PIERS AND DOCKS:		9,363.43	12,512.14	80,000.00	67,487.86	15.64
<b>RIVIERA MISCELLANEOUS</b>						
40-55-40-49000	TRANSFER FROM TOURISM-GRANT	.00	.00	.00	.00	.00
Total RIVIERA MISCELLANEOUS:		.00	.00	.00	.00	.00

Account Number	Account Title	2026-26 Period Actual	2026-26 Current year Actual	Current year Budget	Variance Current year	% of Budget
<b>RIVIERA MISCELLANEOUS</b>						
40-55-40-53000	TOURISM GRANT FUNDS EXP	.00	.00	.00	.00	.00
Total RIVIERA MISCELLANEOUS:		.00	.00	.00	.00	.00
LAKEFRONT FUND Revenue Total:		590,764.62	597,702.36	1,772,235.00	1,174,532.64	33.73
LAKEFRONT FUND Expenditure Total:		90,915.37	102,907.22	1,779,267.00	1,676,359.78	5.78
Net Total LAKEFRONT FUND:		499,849.25	494,795.14	7,032.00-	501,827.14-	7,036.34-
Net Grand Totals:		499,849.25	494,795.14	7,032.00-	501,827.14-	7,036.34-

Account Number	Account Title	2026-26 Period Actual	2026-26 Current year Actual	Current year Budget	Variance Current year	% of Budget
<b>LAKEFRONT FUND</b>						
<b>LAKEFRONT FUND</b>						
40-00-00-48110	INTEREST INCOME	15,603.75	15,603.75	75,000.00	59,396.25	20.81
40-00-00-49100	APPL. PRIOR YR APPROPRIATIONS	.00	.00	100,000.00	100,000.00	.00
Total LAKEFRONT FUND:		15,603.75	15,603.75	175,000.00	159,396.25	8.92
<b>BUOYS AND BOAT STALLS</b>						
40-52-10-46750	BUOY/BOAT STALL WAITING LIST	.00	.00	.00	.00	.00
40-52-10-46755	KAYAK WAITING LIST	10.00	15.00	50.00	35.00	30.00
40-52-10-46760	BUOY/STALL LATE FEES	375.00	375.00	400.00	25.00	93.75
40-52-10-46770	BUOY & SLIP LEASES-CITY	186,107.26	187,248.19	200,000.00	12,751.81	93.62
40-52-10-46780	KAYAK RACK SPACE RENTAL	8,034.23	8,034.23	8,500.00	465.77	94.52
40-52-10-47250	DONATIONS - LAKEFRONT	.00	.00	.00	.00	.00
Total BUOYS AND BOAT STALLS:		194,526.49	195,672.42	208,950.00	13,277.58	93.65
<b>BUOYS AND BOAT STALLS</b>						
40-52-10-51100	HARBORMASTER SALARY	3,072.36	6,445.42	.00	6,445.42-	.00
40-52-10-51200	PIERS WAGES	.00	.00	.00	.00	.00
40-52-10-51340	HARBOR LIFE INSURANCE	.00	.00	.00	.00	.00
40-52-10-51360	HARBOR RETIREMENT EXP	.00	216.62	.00	216.62-	.00
40-52-10-51520	HARBOR SOCIAL SECURITY	235.03	486.56	.00	486.56-	.00
40-52-10-52110	PIER MAINTENANCE CONTRACT	.00	.00	50,000.00	50,000.00	.00
40-52-10-52640	BUOYS & BOAT STALLS-REPAIRS	.00	.00	65,000.00	65,000.00	.00
40-52-10-53140	LIABILITY & PROPERTY INSURANCE	14,538.74	14,538.74	19,385.00	4,846.26	75.00
40-52-10-53510	EQUIP MAINT SUPP-BUOYS,STALLS	.00	.00	2,000.00	2,000.00	.00
40-52-10-53980	WEST PIER REPLACEMENT FUND	.00	.00	50,000.00	50,000.00	.00
40-52-10-53990	BUOY/STALL MISC. EXPENSES	777.50	777.50	2,500.00	1,722.50	31.10
Total BUOYS AND BOAT STALLS:		18,623.63	22,464.84	188,885.00	166,420.16	11.89
<b>BOAT LAUNCH</b>						
40-52-11-46000	LAUNCH RAMP OVERAGE/SHORTAGE	.00	.00	.00	.00	.00
40-52-11-46750	LAUNCH PASS FEES	1,099.53	1,699.06	8,000.00	6,300.94	21.24
40-52-11-46760	BOAT LAUNCH RAMP INCOME	.00	.00	22,000.00	22,000.00	.00
40-52-11-46770	KAYAK LAUNCH INCOME	.00	.00	500.00	500.00	.00
Total BOAT LAUNCH:		1,099.53	1,699.06	30,500.00	28,800.94	5.57
<b>BOAT LAUNCH</b>						
40-52-11-51200	LAUNCH RAMP WAGES	.00	.00	17,500.00	17,500.00	.00
40-52-11-51520	LAUNCH RAMP SOC SEC	.00	.00	1,339.00	1,339.00	.00
40-52-11-52520	LAUNCH RAMP REPAIRS	.00	.00	2,000.00	2,000.00	.00
40-52-11-53520	LAUNCH RAMP MAINT SUPPLIES	.00	.00	500.00	500.00	.00
40-52-11-53990	LAUNCH RAMP MISCELLANEOUS	21.90	21.90	500.00	478.10	4.38
Total BOAT LAUNCH:		21.90	21.90	21,839.00	21,817.10	.10
<b>BEACH</b>						
40-54-10-43660	DNR LAKE PATROL GRANT	.00	.00	.00	.00	.00
40-54-10-43670	CLEAN BOATS CLEAN WATER GRANT	.00	.00	2,400.00	2,400.00	.00
40-54-10-46100	MISC BEACH REVENUE	.00	.00	.00	.00	.00
40-54-10-46730	BEACH REVENUE	17.06	17.06	565,000.00	564,982.94	.00
40-54-10-46735	BEACH REVENUE-VIPLY	.00	.00	.00	.00	.00

Account Number	Account Title	2026-26 Period Actual	2026-26 Current year Actual	Current year Budget	Variance Current year	% of Budget
40-54-10-46740	BEACH PASS RESIDENTS	6,405.07	7,238.15	24,000.00	16,761.85	30.16
40-54-10-46750	BEACH PASS - SEASONAL	.00	.00	2,000.00	2,000.00	.00
Total BEACH:		6,422.13	7,255.21	593,400.00	586,144.79	1.22
<b>BEACH</b>						
40-54-10-51100	HARBORMASTER WAGES	4,259.34	4,259.34	82,032.00	77,772.66	5.19
40-54-10-51200	BEACH MTCE WAGES	102.04	102.04	6,200.00	6,097.96	1.65
40-54-10-51250	BEACH MTCE OVERTIME WAGES	.00	.00	8,000.00	8,000.00	.00
40-54-10-51260	BEACH SEASONAL WAGES	250.85	250.85	97,000.00	96,749.15	.26
40-54-10-51340	BEACH MTCE LIFE INS	.34	.34	74.00	73.66	.46
40-54-10-51345	BEACH MTCE HEALTH INSURANCE	.00	.00	34,176.00	34,176.00	.00
40-54-10-51350	BEACH MTCE DENTAL INSURANCE	3.14	3.14	1,641.00	1,637.86	.19
40-54-10-51355	BEACH MTCE VISION INSURANCE	.00	.00	110.00	110.00	.00
40-54-10-51360	BEACH MTCE RETIREMENT FUND	7.35	7.35	7,023.00	7,015.65	.10
40-54-10-51370	BEACH MTCE DISABILITY INS	.00	.00	189.00	189.00	.00
40-54-10-51380	UNIFORMS	.00	.00	2,000.00	2,000.00	.00
40-54-10-51520	BEACH SOCIAL SECURITY	352.85	352.85	14,883.00	14,530.15	2.37
40-54-10-52210	BEACH TELEPHONE	51.72	51.72	500.00	448.28	10.34
40-54-10-52220	BEACH ELECTRIC	684.42	960.11	4,700.00	3,739.89	20.43
40-54-10-52640	LAKE SPRAYING	.00	.00	5,000.00	5,000.00	.00
40-54-10-53100	BEACH OFFICE SUPPLIES	1,698.94	1,698.94	5,000.00	3,301.06	33.98
40-54-10-53130	WORKER'S COMPENSATION INS	.00	.00	4,500.00	4,500.00	.00
40-54-10-53140	LIABILITY & PROPERTY INSURANCE	.00	.00	10,000.00	10,000.00	.00
40-54-10-53400	CALE OPERATING AND CC EXP	.00	.00	20,000.00	20,000.00	.00
40-54-10-53520	BEACH MAINTENANCE SUPPLIES	.00	.00	5,000.00	5,000.00	.00
40-54-10-53620	BEACH MAINTENANCE SERVICE COS	.00	.00	2,500.00	2,500.00	.00
40-54-10-53720	BEACH DREDGING	.00	.00	.00	.00	.00
40-54-10-53990	BEACH MISCELLANEOUS	.00	144.79	3,000.00	2,855.21	4.83
40-54-10-57200	WATER SAFETY PATROL	.00	.00	41,758.00	41,758.00	.00
40-54-10-57210	GLAKE LAW ENFORCEMENT AGENCY	.00	.00	.00	.00	.00
40-54-10-57300	GLAKE ENVIRONMENTAL AGENCY	11,250.00	11,250.00	45,000.00	33,750.00	25.00
40-54-10-57350	GENEVA LAKE LEVEL CORP	.00	.00	4,000.00	4,000.00	.00
40-54-10-57800	VENETIAN FESTIVAL FIREWORKS	.00	.00	10,000.00	10,000.00	.00
40-54-10-58000	OUTLAY - BEACH EQUIPMENT	.00	.00	2,000.00	2,000.00	.00
Total BEACH:		18,660.99	19,081.47	416,286.00	397,204.53	4.58
<b>UPPER RIVIERA</b>						
40-55-10-46740	UPPER RIVIERA REVENUE	288,191.94	292,547.39	305,000.00	12,452.61	95.92
40-55-10-46750	UPPER RIVIERA CATERING REV	2,746.67	2,746.67	42,000.00	39,253.33	6.54
40-55-10-46760	UPPER RIVIERA MISC REVENUE	.00	.00	500.00	500.00	.00
Total UPPER RIVIERA:		290,938.61	295,294.06	347,500.00	52,205.94	84.98
<b>UPPER RIVIERA</b>						
40-55-10-51200	RIVIERA MTCE WAGES	18,087.32	21,032.92	77,457.00	56,424.08	27.15
40-55-10-51250	RIVIERA MTCE OVERTIME	1,164.27	1,371.39	9,500.00	8,128.61	14.44
40-55-10-51260	RIVIERA EVENT STAFF WAGES	1,722.42	1,722.42	22,000.00	20,277.58	7.83
40-55-10-51270	RIVIERA EVENT STAFF WAGES	.00	.00	.00	.00	.00
40-55-10-51340	RIVIERA MTCE LIFE INSURANCE	19.90	19.90	82.00	62.10	24.27
40-55-10-51345	RIVIERA MTCE HEALTH INSURANCE	5,470.86	5,470.86	26,063.00	20,592.14	20.99
40-55-10-51350	RIVIERA MTCE DENTAL INSURANCE	367.32	367.32	1,621.00	1,253.68	22.66
40-55-10-51355	RIVIERA MTCE VISION INSURANCE	.00	.00	5.00	5.00	.00
40-55-10-51360	RIVIERA MTCE RETIREMENT FUND	1,354.97	1,581.97	5,576.00	3,994.03	28.37
40-55-10-51370	RIVIERA MTCE DISABILITY INS	44.22	44.22	180.00	135.78	24.57

Account Number	Account Title	2026-26 Period Actual	2026-26 Current year Actual	Current year Budget	Variance Current year	% of Budget
40-55-10-51520	RIVIERA SOCIAL SECURITY	1,573.76	1,808.65	8,335.00	6,526.35	21.70
40-55-10-52210	TELEPHONE EXPENSE	568.99	568.99	1,500.00	931.01	37.93
40-55-10-52240	UPPER RIVIERA GAS HEAT	1,304.67	1,304.67	4,200.00	2,895.33	31.06
40-55-10-52260	UPPER RIV WATER & SEWER BILLS	.00	221.14	2,000.00	1,778.86	11.06
40-55-10-52400	UPPER RIVIERA REPAIRS	.00	.00	2,900.00	2,900.00	.00
40-55-10-53120	POSTAGE EXPENSE	.00	.00	.00	.00	.00
40-55-10-53160	PUBLICATIONS & PROMOTIONS	.00	.00	.00	.00	.00
40-55-10-53500	BLDG MAINT SUPPLIES-UPPER RIV	.00	.00	4,000.00	4,000.00	.00
40-55-10-53600	UPPER RIVIERA MAINTENANCE	4,878.56	4,878.56	9,200.00	4,321.44	53.03
Total UPPER RIVIERA:		36,557.26	40,393.01	174,619.00	134,225.99	23.13
<b>LOWER RIVIERA CONCOURSE</b>						
40-55-20-46790	RIVIERA CONCOURSE ELECTRIC	6,598.77	6,598.77	12,150.00	5,551.23	54.31
40-55-20-48200	RIVIERA CONCOURSE LEASES	.00	.00	120,172.00	120,172.00	.00
40-55-20-48230	RIVIERA PROMOTIONAL REVENUE	.00	.00	.00	.00	.00
40-55-20-48250	DONATIONS-FOUNTAIN	.00	3.75	1,350.00	1,346.25	.28
Total LOWER RIVIERA CONCOURSE:		6,598.77	6,602.52	133,672.00	127,069.48	4.94
<b>LOWER RIVIERA CONCOURSE</b>						
40-55-20-51200	LAKEFRONT SECURITY PD WAGES	73.56	283.51	36,000.00	35,716.49	.79
40-55-20-51520	LAKEFRONT SECURITY PD FICA	5.63	21.70	2,754.00	2,732.30	.79
40-55-20-52210	RIVIERA ELEVATOR PHONE EXPENSE	2,004.37	2,004.37	4,800.00	2,795.63	41.76
40-55-20-52260	LOWER RIV WATER & SEWER BILLS	.00	519.68	4,000.00	3,480.32	12.99
40-55-20-52400	LOWER RIVIERA REPAIRS	.00	.00	33,100.00	33,100.00	.00
40-55-20-53130	WORKERS COMP INSURANCE	.00	.00	2,000.00	2,000.00	.00
40-55-20-53140	LIABILITY & PROPERTY INSURANCE	.00	.00	9,450.00	9,450.00	.00
40-55-20-53500	BLDG MAINT SUPPLIES-LOWER RIV	833.66	833.66	8,000.00	7,166.34	10.42
40-55-20-53550	FOUNTAIN MAINT EXP	.00	.00	1,500.00	1,500.00	.00
40-55-20-53600	RIV MAINTENANCE SERVICE COSTS	4,568.96	4,568.96	15,000.00	10,431.04	30.46
40-55-20-53990	MISCELLANEOUS EXPENSES	201.98	201.98	500.00	298.02	40.40
40-55-20-58000	OUTLAY - RIVIERA EQUIPMENT	.00	.00	9,000.00	9,000.00	.00
40-55-20-59300	TRANSFER TO GENERAL FUND	.00	.00	771,534.00	771,534.00	.00
40-55-20-59350	TRANSFER TO CAPITAL PROJECTS	.00	.00	.00	.00	.00
Total LOWER RIVIERA CONCOURSE:		7,688.16	8,433.86	897,638.00	889,204.14	.94
<b>RIVIERA PIERS AND DOCKS</b>						
40-55-30-48210	RIVIERA DOCKS LEASES	.00	.00	160,105.00	160,105.00	.00
40-55-30-48220	BUOY & SLIP LEASES-RIVIERA	75,575.34	75,575.34	123,108.00	47,532.66	61.39
Total RIVIERA PIERS AND DOCKS:		75,575.34	75,575.34	283,213.00	207,637.66	26.68
<b>RIVIERA PIERS AND DOCKS</b>						
40-55-30-52220	PIER ELECTRIC	9,363.43	12,512.14	35,000.00	22,487.86	35.75
40-55-30-52640	PIER REPAIRS	.00	.00	45,000.00	45,000.00	.00
Total RIVIERA PIERS AND DOCKS:		9,363.43	12,512.14	80,000.00	67,487.86	15.64
<b>RIVIERA MISCELLANEOUS</b>						
40-55-40-49000	TRANSFER FROM TOURISM-GRANT	.00	.00	.00	.00	.00
Total RIVIERA MISCELLANEOUS:		.00	.00	.00	.00	.00

Account Number	Account Title	2026-26 Period Actual	2026-26 Current year Actual	Current year Budget	Variance Current year	% of Budget
<b>RIVIERA MISCELLANEOUS</b>						
40-55-40-53000	TOURISM GRANT FUNDS EXP	.00	.00	.00	.00	.00
Total RIVIERA MISCELLANEOUS:		.00	.00	.00	.00	.00
LAKEFRONT FUND Revenue Total:		590,764.62	597,702.36	1,772,235.00	1,174,532.64	33.73
LAKEFRONT FUND Expenditure Total:		90,915.37	102,907.22	1,779,267.00	1,676,359.78	5.78
Net Total LAKEFRONT FUND:		499,849.25	494,795.14	7,032.00-	501,827.14-	7,036.34-
Net Grand Totals:		499,849.25	494,795.14	7,032.00-	501,827.14-	7,036.34-