



City of Lake Geneva, 626 Geneva St, Lake Geneva, WI 53147-262.248.3673-www.cityoflakgeneva.gov

Piers, Harbors, and Lakefront Committee Agenda
Tuesday, May 12, 2026 - 5:00 PM
Lake Geneva City Hall; Council Chambers

Members:

Chair: Cindy Yager

JaNelle Powers, Sherri Ames, Linda Frame and Cathy Stoodley

1. Call to Order
2. Roll Call
3. Comments from the public limited to 5 minutes, limited to items on this agenda
4. Approval of the minutes from April 14, 2026
5. Harbormaster Report
6. Discussion/Recommendation regarding addition of boat launch signage and educational materials addressing Wake Enhanced and Surf Boating concerns and suggestions
7. Discussion/Recommendation regarding installation of AIS Signage provided by GLEA
8. Discussion/Recommendation regarding installation of E. Coli Signage provided by GLEA
9. Discussion/Recommendation regarding YMCA summer camp beach passes
10. Discussion/Recommendation regarding the Lakefront Budget
11. Adjournment

A quorum of the Council may be present; however, no official Council action will be taken.
Requests from persons with disabilities who need assistance to participate in this meeting should be made to the City Clerk's office in advance so that the appropriate accommodations can be made.

City Of Lake Geneva Piers, Harbors, And Lakefront Committee Minutes
Tuesday, April 14, 2026 - 5:00 PM
Lake Geneva City Hall; Council Chambers

Call to Order

at 5:00 pm by Chairperson Yager.

Roll Call

Present: Cynthia Yager, Sherri Ames, Linda Frame, Brian Smith and Cathy Stoodley. Absent: None. Others present: City Administrator Dave De Angelis, City Clerk Lacey L. Reynolds, Mayor Todd Krause, Alders JaNelle Powers & Mary Jo Fesenmaier and other interested persons.

Comments from the public limited to 5 minutes, limited to items on this agenda

Mary Jo Fesenmaier spoke regarding item 7.

Approval of the minutes from February 10, 2026

Motion by Stoodley to approve, second by Frame. Voice vote, approved, motion carried.

Harbormaster Report

Parks Director David Winger reviewed the report and introduced the new Harbormaster, Luke Riesterer.

Presentation regarding Wake Enhanced Sports, AIS Signage, and ECOLI Signage - GLEA

Holly Baseman from GLEA presented on recommendations for Wake Enhanced Sports, AIS and E. Coli signage. Holly noted the GLEA will provide new signs for the City of Lake Geneva.

Presentation regarding Police Boat Placement at West End Pier

Chief Ed Gritzner gave a presentation on the Police Boat and the location of the boat at West End Pier.

Discussion/Recommendation regarding revised Water Safety Contract

Parks Director Winger reviewed the updated and noting more protection in the contract like the WSP providing a weekly incident report. Motion by Stoodley to approve, second by Frame. Voice vote, approved, motion carried.

Discussion/Recommendation regarding the Lakefront Budget

Parks Director Winger explained the process for seaweed harvesting and asked the committee about reallocating funds for another item in the budget. Winger also noted the ADA ramp will be done after the CORP is complete. Harbormaster Reisterer explained a potential new project to help the mobility challenged and provide more accessibility to the beach. The committee is interested in reallocating the funds from the seaweed harvester to another project.

Adjournment

Motion by Ames to adjourn, second by Stoodley. Voice vote, approved, motion carried. Adjourned at 6:09 pm.

Lacey L. Reynolds
City Clerk



Lake Front Report

To: Lake Geneva Board of Piers, Harbors and Lake Front Commissioners
From: Luke Riesterer, Harbormaster
Subject: 5/12/2026 Harbormaster Report

Department Update

I. Operations & Facilities

- a. Beach and Launch Staff have been hired. Orientations began on 5/9/26
- b. West Pier, Fishing Pier and Dinghy Ramps have been installed for the 2026
- c. Library Park Buoys have been installed except for 3 buoys. Gage will be installing these 3 the week of May 11th. Lessees for these buoys have been notified.
- d. Repairs are underway for Gas/Riviera Pier as well as Elmers Pier

II. Leases

- a. West Pier and Riviera slips are full
- b. Working to fill remaining spots for kayak and buoys
- c. All tags and stickers have been mailed out except for those who are missing documents. They have been notified of missing documents and will receive tags and stickers once documents are received

III. Community Engagement

- a. YMCA looking to receive donated beach access for their summer camp campers.

5/12/2026 P.H.L commission agenda – background information

I. **Item #6: Discussion/Recommendation regarding addition of boat launch signage and educational materials addressing Wake Enhanced and Surf Boating concerns and suggestions.**

Background for Board Report:

Concerns have been made regarding the damage to aquatic life due to wake enhanced and surf boats utilized near shore and in shallow water. The DNR has stated that Geneva Lake has lower than normal aquatic plant life and have stated that a potential contributing factor is the increased usage of wake enhanced boats on the water. To help protect the aquatic life GLEA is looking to partner with the city to install a sign and some other educational materials to better educate and inform boaters of the situation. On the sign it is recommending that boats with large or enhanced wake capabilities operate 500ft from shore and/or in water that is a minimum of 30 ft deep. Signs will be provided at GLEA's expense.

Board Role:

Provide recommendation on this partnership and installation of sign.

II. **Item #7: Discussion/Recommendation regarding installation of AIS Signage provided by GLEA.**

Background for Board Report:

GLEA is looking to partner with the City to update our current AIS signage to the new ones approved by the County. These signs provide clearer information and also provide **Spanish translations**. The signs would also include the City logo to further strengthen the partnership between GLEA and the city. Signs will be provided at GLEA's expense.

Board Role:

Provide recommendation on this partnership and installation of sign.

III. **Item #8: Discussion/Recommendation regarding installation of E. Coli Signage provided by GLEA.**

Background for Board Report:

GLEA is looking to partner with the City to install new E. Coli signs and displays at the Riviera Beach. These signs provide clearer information and viewing to identify current E. Coli levels. These signs in corroboration with the information about the current E. Coli level and changes being posted online and communicated by beach staff will help provide patrons with the most current information regarding E. Coli levels. With this will also be provided a box to store and display the signage allowing easier and quicker responses to updating the signage. The signs would also include the City logo to further strengthen the partnership between GLEA and the city. Signs will be provided at GLEA's expense.

Board Role:

Provide recommendation on this partnership and installation of sign.

IV. Item #9 Discussion/Recommendation regarding the donated beach access for YMCA summer program

Background for Board Report:

In previous years the YMCA has been donated beach access for their summer program campers. For 2026 the YMCA is looking for weekly access (1 day each week) for 80 campers and staff members to access the beach from 11am to 2:30pm. The dates they would be wanting access are: June 17th, July 1st, July 15th, July 22nd, August 5th, August 12th, August 19th, and August 26th. This would be a value of \$800/wk or \$6,400/season. Potential options are: full donation, half donation, full donation w/ required volunteering to clean up the beach and lake front areas pre and post season.

Board Role:

Provide recommendation on this partnership

V. Item #9: Discussion/Recommendation regarding the Lakefront Budget. Cont.

Background for Board Report:

Funds had previously been allocated for the City to acquire a seaweed harvester this year. After some consideration the Committee is reviewing alternative utilizations of these funds. One of the potential options is the acquisition of mobility aids for the Riviera Beach, kayak launch, and boat launch. Such devices include:

- **Mobi-Mat:** Roll out mats that can be laid across sand, grass, gravel, etc. To allow easier traversing of the area for all patrons including those who utilize mobility aids.
- **Beach Wheelchairs/Walkers (floating and non):** These wheelchairs and walkers allow patrons with mobility issues to easily traverse across the sand at the beach and can allow for enjoyment of the water when utilizing a floating version. There are models that require the user to be pushed while others allow the user to utilize the equipment independently.
- **Water Access Mats:** Roll out mats that can be laid across grass, gravel, rocks and sand to provide easier access to areas including water environments. The mats help to provide an increased stabilized surface as well as increased traction in water environments.
- **Kayak Launch aid:** These are "arms" that can be attached to a pier to allow a stabilized surface to rest and launch a kayak from. These also provide assistance in raising and lowering a kayak to and from the water.
- **Dinghy Ramp modifications/alternatives:** The current dinghy ramps can be difficult for some patrons to use. Options for alternatives or modifications to the area to sure up current dinghy ramps could also be reviewed.

Board Role:

Provide recommendation on potential alternative allocations for the funds originally designated for the seaweed harvester.



Agenda Item Memo

City of Lake Geneva

Committee: PHL

Meeting Date: 5/12/2026

Subject / Title: Lakefront Signage Update Approval

Submitted By: David Winger

Background / Request

Geneva Lake Environmental Agency (GLEA) approached the PHL Committee requesting to update and post the following signs:

- Wake Enhanced & Surf Boating Awareness Sign – Item #6
- Aquatic Invasive Species (AIS) Prevention Sign – Item #7
- E. Coli Level Indicator Signs – Item #8

GLEA will purchase all signs and equipment, and co-brand them with the City logo to present a partnered approach to lake awareness and safety. City will install at their desired locations.

Fiscal Impact / Budget

- **Estimated Cost:** \$0
- **Funding Source:** Click or tap here to enter text.(e.g., General Fund, TID, Water Utility, Grants)
- **Budget Status:** Within Budget _____ Over Budget _____
 Budget Amendment Required _____
- **GL Number:** _____

(If applicable, note grant awards, cost-sharing, or capital plan references.)

Ordinance/Policy Implications/Changes:

Recommendation:

Recommend the following motion:

- A. *Motion to recommend the proposed signage from Geneva Lake Environmental Agency (GLEA) on the condition that each sign is co-branded with the City of Lake Geneva logo.*

Implementation/Next Steps

Name of Committee	Date of Meeting	Original Agenda Item #	Outcome
PHL	5/12/2026	#6, 7, & 8	TBD
Council	5/26/2026		

Attachments (list any and all attachments that go with this item and memo)

AIS, E. Coli, and Wake proposed signage.

Reviewed by	Date:	Comments



Geneva Lake Environmental Agency

Village of Fontana - Village of Williams Bay - City of Lake Geneva - Town of Linn - Town of Walworth
Phone: 262.245.4532 Fax: 262.245.4533 Email: info@gleawi.org Website: www.gleawi.org
105 N Elkhorn Rd., P.O. Box 914, Williams Bay, WI 53191

Recommendation on Wake-Enhanced Sports on Geneva Lake for Ecological Protection

Date: March 2026

Purpose

This recommendation outlines the growing ecological concerns surrounding wake-enhanced water sports on Wisconsin's inland lakes and recommends policy action by municipalities around Geneva Lake to help preserve shoreline integrity, water quality, and public safety.

Background

Wake enhanced enabled boats or larger boats can create large wave action reaching to the bottom of the lake when recreating in water depths under 30 feet. Wake enhanced boats are often 22 to 26 feet in length and are specifically designed or modified to create large, powerful wakes for sports like wakesurfing and wakeboarding. These boats often rely on **ballast tanks**, **hydrofoils**, and **trim tabs** to generate significant wave energy, increasing the environmental and safety risks far beyond that of traditional recreational boats.

These wakes:

- Accelerate **shoreline erosion**, even hundreds of feet from shore
- Disrupt **aquatic vegetation**, **fish spawning areas**, and **benthic habitat**
- Resuspend **nutrient-rich sediments**, contributing to harmful algae blooms
- Pose safety concerns to **kayakers**, **paddleboarders**, **swimmers**, and small watercraft
- Spread **aquatic invasive species** through unemptied and unsanitized ballast systems

Ballast tanks, which can hold hundreds to thousands of pounds of water, are one of the key contributors. They can also harbor and transfer **invasive species** like zebra mussel larvae or spiny water fleas, if not fully drained and disinfected between lake visits, causing other issues to the lake.

Aftermarket **wake-enhancing devices** (such as wave plates or ballast bags) further intensify wave size, often without boaters being fully aware of the extended reach or impact of their wake. With Geneva Lake's increasing popularity, these impacts are growing more visible and more frequent.

State and Local Developments

Legislative Efforts:

- **SB 1024 (2026):** would require wake-enhanced boating to be done **≥500 ft from shore**, in **≥20 ft of water**, and **explicitly preserves local government authority** to enact stronger lake protections (with civil immunity for enforcement).
- **AB 1033 / SB 1025 (2026):** would set a **~200–300 ft shoreline setback** for wakesurfing but **has no minimum depth requirement or strong local control protections**.

Local Ordinances:

- The Town of Presque Isle banned wake-enhancing equipment on 70 lakes.
- Oneida, Bayfield, and Jefferson Counties passed advisory resolutions recommending shoreline setbacks (500–700 feet) and depth minimums (30 feet).
- Town of Ottawa lakes (Hunters, Pretty, School Section), Waukesha County: Prohibit using equipment to enhance wakes and operate boat in artificially bow-high manner.
- Town of Norway lakes (Long, Waubeesee, Wind), Racine County: Prohibit wake surfing (riding wake without rope connection to boat).
- Ten other lakes within Waukesha, Racine, and Washington County are working on recommendations.

Wake Sports Reform Coalition

Formed in 2024, the Wakesports Reform Coalition comprised of 76 member groups, including: Last Wilderness Alliance, Walleyes for Tomorrow, Wisconsin's Green Fire, Wisconsin Lakes, Wisconsin Wildlife Federation, and more, has supported a statewide rule requiring wake-enhanced boating to occur:

- At least 700 feet from shore
- More than 500 feet from other boats or lake users
- In water at least 30 feet deep
- With boats fully emptied and sanitized before launching to prevent the spread of aquatic invasive species

GLEA Recommendation

In partnership with the Southeastern Wisconsin Regional Planning Commission (SEWRPC), the Geneva Lake Environmental Agency (GLEA) has reviewed local lake data and statewide trends.

Based on the majority of what other lakes across the state are doing and weighing the ecological impact, GLEA recommends:

Wake-enhanced and surf boating shall occur no closer than 500 feet from shore and only in areas where the lake is at least 30 feet deep.

This recommendation helps:

- Preserve Geneva Lake's ecological health
- Reduce shoreline erosion
- Limit nutrient disturbance and algae risk
- Improve safety for non-motorized users and swimmers

Call to Action for Municipalities Around Geneva Lake

To ensure consistent and science-based protections across Geneva Lake, GLEA urges surrounding municipalities at this point in time to help communicate the recommendation.

Then in the future to possibly:

- 1. Adopt a Uniform Local Ordinance**
Require wake-enhanced boating to follow the recommended 500-foot/30-foot standard.
- 2. Coordinate with Enforcement Partners**
Work with water patrol to support education, compliance, and public safety.
- 3. Launch Public Awareness Campaigns**
Incorporate wake boat guidance into pier permitting packets, newsletters, boat launch signage, and association communications.
- 4. Engage Regionally**
Collaborate with Walworth County and other lakefront municipalities for a cohesive lake-wide policy.

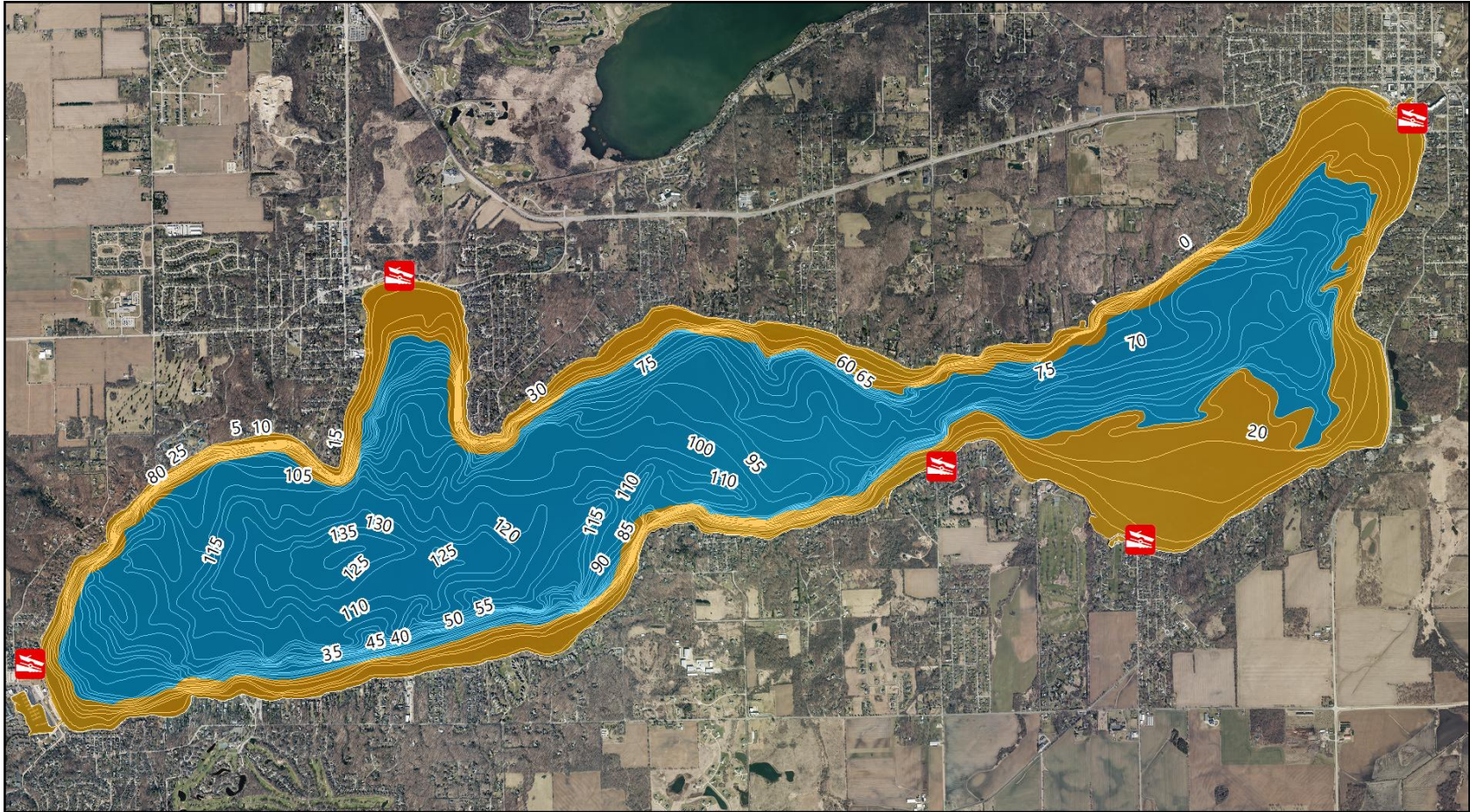
Contact and Support: GLEA is ready to assist with ordinance templates, education materials, and signage. Contact: director@gleawi.org, or call (262) 683-2067

Proposed Signage:



Attachment: Map of Geneva Lake and recommended wake enhanced zone

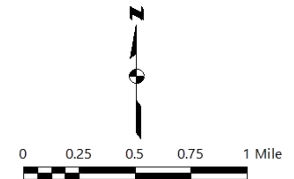
Recommended Area for Wake-Enhanced Boating on Geneva Lake: 500' from Shore and 30' Deep



- OVER 500' FROM SHORE AND OVER 30' DEEP (3,482 ACRES)
- LESS THAN OR EQUAL TO 500' FROM SHORE OR 30' DEEP (1,955 ACRES)
- BATHYMETRIC LINE
- PUBLIC BOAT LAUNCH

Note: Date of Aerial Photography: 2024

Source: Wisconsin Department of Natural Resources and Southeastern Wisconsin Regional Planning Commission



AIS Signage

Current signage at boat launches around the lake is often mounted high on light posts and positioned out of direct sightlines, making it easy for users to overlook critical Clean Boats Clean Waters messaging. For signage to be effective, it must be at eye level, prominent, and clearly visible where boaters are preparing to launch and load. Improved, highly visible signs would allow launch attendants to easily point to the guidance while engaging with users, reinforcing inspection, removal, and drainage practices in real time. Clear, accessible signage is a simple but essential tool to strengthen compliance and protect the lake from aquatic invasive species. GLEA will purchase movable sign bases and provide two AIS signs so that users at launches can see the signage as they enter and leave the lake.

Example of sign base and AIS sign below:



NEW E. Coli Recommendations 2026

Use the Highest Sample Within the Beach

Due to issue last year with a level of 144 and the average being at 84 for a beach, it's not accurate as that pocket of 144 can be moving around. Even though 144 is still below the cautionary level of 235, it is more accurate to post the highest measurement verses the average of 144.

This protects all municipalities from dilution effects in other areas, and posts and more accurate portrayal of e. coli levels. GLEA is also looking into other ways to test E. coli levels for more accurate results.

After a Heavy Rainfall the Signs Go to Yellow for 24 Hours

Most elevated E. coli events are linked to:

- Heavy rainfall (24–48 hour window) – most common so recommend we change signs
- Large bird presence
- Stream inflows
- Resuspension during high winds

New Signage



Swim at your own risk. Water quality conditions may change.
Nadar bajo su propio riesgo. Las condiciones de la calidad del agua pueden cambiar.

-  **Do not swallow the water.**
No tragar el agua.
-  **Wash hands before eating.**
Lavar las manos antes de comer.
-  **Shower after swimming.**
Ducharse después de nadar.



Swim at your own risk. Bacteria levels are moderately high.
Nadar bajo su propio riesgo. Los niveles de bacterias son moderadamente altos.

-  **Do not swallow the water.**
No tragar el agua.
-  **Wash hands before eating.**
Lavar las manos antes de comer.
-  **Shower after swimming.**
Ducharse después de nadar.





Bacteria levels are currently unsafe for swimming.
Actualmente los niveles de bacterias no son seguros para nadar.

DO NOT SWIM!
¡NO NADAR!



New Signage System

Locked box with four slots in each box for beach signs: green, yellow, red, algae. Signs can be slid out, changed quickly, and all signs can then be kept in one location. No more having to unscrew a sign to change it.





Agenda Item Memo

City of Lake Geneva

Committee: PHL

Meeting Date: 5/12/2026

Subject / Title: YMCA Beach Pass Request

Submitted By: Luke Riesterer

Background / Request

The Geneva Lakes Family YMCA approached the staff requesting beach passes to be donated against revenue to allow 80 campers access to the Riviera Beach on:

- June 17th, July 1st, July 15th, July 22nd, August 5th, August 12th, August 19th, and August 26th.

This would be \$800 per visit donation (\$10/person x 80 people) for a total of \$6,400 donation for the 8 visits over the summer.

Fiscal Impact / Budget

- **Estimated Cost: (\$6,400)**
- **Funding Source: Lakefront Fund** (e.g., General Fund, TID, Water Utility, Grants)
- **Budget Status:** Within Budget _____ Over Budget _____
 Budget Amendment Required _____
- **GL Number: 40-54-10-46730**

(If applicable, note grant awards, cost-sharing, or capital plan references.)

Ordinance/Policy Implications/Changes:

Recommendation:

Recommend the following motion:

- A. *Motion to recommend YMCA beach pass request based on amount agreed upon during PHL discussion.*

Implementation/Next Steps

Name of Committee	Date of Meeting	Original Agenda Item #	Outcome
PHL	5/12/2026	#9	TBD
Council	5/26/2026		

Attachments (list any and all attachments that go with this item and memo)

Letter from Emma Watters from the Geneva Lakes Family YMCA.

Reviewed by	Date:	Comments



FOR YOUTH DEVELOPMENT®
FOR HEALTHY LIVING
FOR SOCIAL RESPONSIBILITY

April 21, 2026

TO : Luke Riesterer, Harbormaster
City of Lake Geneva | Piers, Harbor & Lakefront Committee

FR: Emma Watters, Camp Director
Geneva Lakes Family YMCA

RE: Beach Pass Request

The City of Lake Geneva and the YMCA have been community partners throughout the years. Together, we have brought programming to families and youth to enrich their lives and to provide positive, lifetime experiences. A significant part of what we offer is summer camp programming.

Background

The Geneva Lakes Family YMCA has been the primary year-round childcare provider in our shared community. Since 2014, we have offered a variety of summer camp programs that have served children from the ages of 3-13 years old. We have grown from serving a total of 10 campers to more than 300 campers in 2024, which included local, out-of-state, and international residences.

Request

We would like to request 80 beach passes for the 2026 season to enrich the summer day camp program for our campers.

Beach Use

A highlight of our program is taking campers to Riviera Beach for a few hours of “fun in the sun”. Typically, it has been one day a week on a Wednesday, from 11 am – 2:30 pm. We set up an area marked with cones that provide a visual boundary for our campers. During that time, the campers engage in both water and sand play activities.

GENEVA LAKES FAMILY YMCA | 203 S. Wells Street | Lake Geneva, WI 53147
www.GenevaLakesYMCA.org | 262.248.6211

Attendance & Supervision

On a beach day, we typically will have anywhere from 60-80 campers ages 4-14 years old. In addition, we have between 15-18 camp counselors, leaders, and directors on site to supervise. We also bring our lifeguard employed by the YMCA to accompany this beach visit.

Safety

All YMCA staff are CPR/First Aid certified. Families provide approved flotation devices for the children who have not passed our swim test. We also have extra flotation devices on hand. All children wear color-coded necklaces that reflect their swimming abilities, allowing us to easily identify and monitor the use of flotation devices and keep swimming practice safe. Children are only allowed at the pier if they have achieved the highest swim tier and must be accompanied by camp staff.

Timeframe

Ideally, we would love to have this request approved by April 30. This will allow us time to put together a beach schedule that is approved by the Piers, Harbor & Lakefront Committee. Please know the opportunity to collaborate with the City of Lake Geneva has been so beneficial to the children participating. It allows us the chance to practice our Y Values of Caring, Honesty, Respect, and Responsibility in the public space while exploring themes of ecosystems, taking care of our natural resources, and an appreciation for the local community. It has also strengthened the children's swimming skills, which is vital in a community surrounded by lakes, rivers, ponds, and pools.

Thank you in advance for your time and consideration. We look forward to future collaborations with the City of Lake Geneva allowing us to make the most of its abundant natural resources



Agenda Item Memo

City of Lake Geneva

Committee: PHL

Meeting Date: 5/12/2026

Subject / Title: Seaweed Harvester CIP Funds Reallocation

Submitted By: David Winger

Background / Request

After discussions over the last couple of PHL meetings, it has become evident that the Committee does not want to move forward with the purchase of a seaweed harvester. The Harbormaster brought forward ideas that could increase accessibility to and usability of the beach. Ideas are:

- **Mobi Mats** – Roll out mats allow easier travel to and from sand to the water including for those that utilize mobility aids or have strollers
- **Beach Mobility Devices** – Wheelchairs and walkers that can be used for travel on sand
- **Mobi Mats for Water Access** – Increases stabilization and traction (options for Boat Launch and Kayak Launch)
- **Kaya Arm** – Kayak launch aid

All images and information are in the packet. There is a link for the Kaya Arm. A discussion on what products could be purchased with the reallocated funds is what staff are looking for.

Fiscal Impact / Budget

- **Estimated Cost: \$340.00 - \$50,000.00**
- **Funding Source: Lakefront CIP** (e.g., General Fund, TID, Water Utility, Grants)
- **Budget Status:** Within Budget _____ Over Budget _____
 Budget Amendment Required _____
- **GL Number: 43-40-00-17015**

(If applicable, note grant awards, cost-sharing, or capital plan references.)

Ordinance/Policy Implications/Changes:

Recommendation:

Recommend the following motion:

- A. *Motion to recommend the reallocation of funds from the Seaweed Harvester CIP line item for the purchase of accessibility and usability products and devices for the Lakefront.*

Implementation/Next Steps

Name of Committee	Date of Meeting	Original Agenda Item #	Outcome
PHL	5/12/2026	#6, 7, & 8	TBD
Council	5/26/2026		

Attachments (list any and all attachments that go with this item and memo)

Mobility product and ADA equipment document. Quote from Mobi Mat for discussion purposes.

Reviewed by	Date:	Comments

Account Number	Account Title	2026-26 Period Actual	2026-26 Current year Actual	Current year Budget	Variance Current year	% of Budget
LAKEFRONT FUND						
LAKEFRONT FUND						
40-00-00-48110	INTEREST INCOME	15,603.75	15,603.75	75,000.00	59,396.25	20.81
40-00-00-49100	APPL. PRIOR YR APPROPRIATIONS	.00	.00	100,000.00	100,000.00	.00
Total LAKEFRONT FUND:		15,603.75	15,603.75	175,000.00	159,396.25	8.92
BUOYS AND BOAT STALLS						
40-52-10-46750	BUOY/BOAT STALL WAITING LIST	.00	.00	.00	.00	.00
40-52-10-46755	KAYAK WAITING LIST	10.00	15.00	50.00	35.00	30.00
40-52-10-46760	BUOY/STALL LATE FEES	375.00	375.00	400.00	25.00	93.75
40-52-10-46770	BUOY & SLIP LEASES-CITY	186,107.26	187,248.19	200,000.00	12,751.81	93.62
40-52-10-46780	KAYAK RACK SPACE RENTAL	8,034.23	8,034.23	8,500.00	465.77	94.52
40-52-10-47250	DONATIONS - LAKEFRONT	.00	.00	.00	.00	.00
Total BUOYS AND BOAT STALLS:		194,526.49	195,672.42	208,950.00	13,277.58	93.65
BUOYS AND BOAT STALLS						
40-52-10-51100	HARBORMASTER SALARY	3,072.36	6,445.42	.00	6,445.42-	.00
40-52-10-51200	PIERS WAGES	.00	.00	.00	.00	.00
40-52-10-51340	HARBOR LIFE INSURANCE	.00	.00	.00	.00	.00
40-52-10-51360	HARBOR RETIREMENT EXP	.00	216.62	.00	216.62-	.00
40-52-10-51520	HARBOR SOCIAL SECURITY	235.03	486.56	.00	486.56-	.00
40-52-10-52110	PIER MAINTENANCE CONTRACT	.00	.00	50,000.00	50,000.00	.00
40-52-10-52640	BUOYS & BOAT STALLS-REPAIRS	.00	.00	65,000.00	65,000.00	.00
40-52-10-53140	LIABILITY & PROPERTY INSURANCE	14,538.74	14,538.74	19,385.00	4,846.26	75.00
40-52-10-53510	EQUIP MAINT SUPP-BUOYS,STALLS	.00	.00	2,000.00	2,000.00	.00
40-52-10-53980	WEST PIER REPLACEMENT FUND	.00	.00	50,000.00	50,000.00	.00
40-52-10-53990	BUOY/STALL MISC. EXPENSES	777.50	777.50	2,500.00	1,722.50	31.10
Total BUOYS AND BOAT STALLS:		18,623.63	22,464.84	188,885.00	166,420.16	11.89
BOAT LAUNCH						
40-52-11-46000	LAUNCH RAMP OVERAGE/SHORTAGE	.00	.00	.00	.00	.00
40-52-11-46750	LAUNCH PASS FEES	1,099.53	1,699.06	8,000.00	6,300.94	21.24
40-52-11-46760	BOAT LAUNCH RAMP INCOME	.00	.00	22,000.00	22,000.00	.00
40-52-11-46770	KAYAK LAUNCH INCOME	.00	.00	500.00	500.00	.00
Total BOAT LAUNCH:		1,099.53	1,699.06	30,500.00	28,800.94	5.57
BOAT LAUNCH						
40-52-11-51200	LAUNCH RAMP WAGES	.00	.00	17,500.00	17,500.00	.00
40-52-11-51520	LAUNCH RAMP SOC SEC	.00	.00	1,339.00	1,339.00	.00
40-52-11-52520	LAUNCH RAMP REPAIRS	.00	.00	2,000.00	2,000.00	.00
40-52-11-53520	LAUNCH RAMP MAINT SUPPLIES	.00	.00	500.00	500.00	.00
40-52-11-53990	LAUNCH RAMP MISCELLANEOUS	21.90	21.90	500.00	478.10	4.38
Total BOAT LAUNCH:		21.90	21.90	21,839.00	21,817.10	.10
BEACH						
40-54-10-43660	DNR LAKE PATROL GRANT	.00	.00	.00	.00	.00
40-54-10-43670	CLEAN BOATS CLEAN WATER GRANT	.00	.00	2,400.00	2,400.00	.00
40-54-10-46100	MISC BEACH REVENUE	.00	.00	.00	.00	.00
40-54-10-46730	BEACH REVENUE	17.06	17.06	565,000.00	564,982.94	.00
40-54-10-46735	BEACH REVENUE-VIPLY	.00	.00	.00	.00	.00

Account Number	Account Title	2026-26 Period Actual	2026-26 Current year Actual	Current year Budget	Variance Current year	% of Budget
40-54-10-46740	BEACH PASS RESIDENTS	6,405.07	7,238.15	24,000.00	16,761.85	30.16
40-54-10-46750	BEACH PASS - SEASONAL	.00	.00	2,000.00	2,000.00	.00
Total BEACH:		6,422.13	7,255.21	593,400.00	586,144.79	1.22
BEACH						
40-54-10-51100	HARBORMASTER WAGES	4,259.34	4,259.34	82,032.00	77,772.66	5.19
40-54-10-51200	BEACH MTCE WAGES	102.04	102.04	6,200.00	6,097.96	1.65
40-54-10-51250	BEACH MTCE OVERTIME WAGES	.00	.00	8,000.00	8,000.00	.00
40-54-10-51260	BEACH SEASONAL WAGES	250.85	250.85	97,000.00	96,749.15	.26
40-54-10-51340	BEACH MTCE LIFE INS	.34	.34	74.00	73.66	.46
40-54-10-51345	BEACH MTCE HEALTH INSURANCE	.00	.00	34,176.00	34,176.00	.00
40-54-10-51350	BEACH MTCE DENTAL INSURANCE	3.14	3.14	1,641.00	1,637.86	.19
40-54-10-51355	BEACH MTCE VISION INSURANCE	.00	.00	110.00	110.00	.00
40-54-10-51360	BEACH MTCE RETIREMENT FUND	7.35	7.35	7,023.00	7,015.65	.10
40-54-10-51370	BEACH MTCE DISABILITY INS	.00	.00	189.00	189.00	.00
40-54-10-51380	UNIFORMS	.00	.00	2,000.00	2,000.00	.00
40-54-10-51520	BEACH SOCIAL SECURITY	352.85	352.85	14,883.00	14,530.15	2.37
40-54-10-52210	BEACH TELEPHONE	51.72	51.72	500.00	448.28	10.34
40-54-10-52220	BEACH ELECTRIC	684.42	960.11	4,700.00	3,739.89	20.43
40-54-10-52640	LAKE SPRAYING	.00	.00	5,000.00	5,000.00	.00
40-54-10-53100	BEACH OFFICE SUPPLIES	1,698.94	1,698.94	5,000.00	3,301.06	33.98
40-54-10-53130	WORKER'S COMPENSATION INS	.00	.00	4,500.00	4,500.00	.00
40-54-10-53140	LIABILITY & PROPERTY INSURANCE	.00	.00	10,000.00	10,000.00	.00
40-54-10-53400	CALE OPERATING AND CC EXP	.00	.00	20,000.00	20,000.00	.00
40-54-10-53520	BEACH MAINTENANCE SUPPLIES	.00	.00	5,000.00	5,000.00	.00
40-54-10-53620	BEACH MAINTENANCE SERVICE COS	.00	.00	2,500.00	2,500.00	.00
40-54-10-53720	BEACH DREDGING	.00	.00	.00	.00	.00
40-54-10-53990	BEACH MISCELLANEOUS	.00	144.79	3,000.00	2,855.21	4.83
40-54-10-57200	WATER SAFETY PATROL	.00	.00	41,758.00	41,758.00	.00
40-54-10-57210	GLAKE LAW ENFORCEMENT AGENCY	.00	.00	.00	.00	.00
40-54-10-57300	GLAKE ENVIRONMENTAL AGENCY	11,250.00	11,250.00	45,000.00	33,750.00	25.00
40-54-10-57350	GENEVA LAKE LEVEL CORP	.00	.00	4,000.00	4,000.00	.00
40-54-10-57800	VENETIAN FESTIVAL FIREWORKS	.00	.00	10,000.00	10,000.00	.00
40-54-10-58000	OUTLAY - BEACH EQUIPMENT	.00	.00	2,000.00	2,000.00	.00
Total BEACH:		18,660.99	19,081.47	416,286.00	397,204.53	4.58
UPPER RIVIERA						
40-55-10-46740	UPPER RIVIERA REVENUE	288,191.94	292,547.39	305,000.00	12,452.61	95.92
40-55-10-46750	UPPER RIVIERA CATERING REV	2,746.67	2,746.67	42,000.00	39,253.33	6.54
40-55-10-46760	UPPER RIVIERA MISC REVENUE	.00	.00	500.00	500.00	.00
Total UPPER RIVIERA:		290,938.61	295,294.06	347,500.00	52,205.94	84.98
UPPER RIVIERA						
40-55-10-51200	RIVIERA MTCE WAGES	18,087.32	21,032.92	77,457.00	56,424.08	27.15
40-55-10-51250	RIVIERA MTCE OVERTIME	1,164.27	1,371.39	9,500.00	8,128.61	14.44
40-55-10-51260	RIVIERA EVENT STAFF WAGES	1,722.42	1,722.42	22,000.00	20,277.58	7.83
40-55-10-51270	RIVIERA EVENT STAFF WAGES	.00	.00	.00	.00	.00
40-55-10-51340	RIVIERA MTCE LIFE INSURANCE	19.90	19.90	82.00	62.10	24.27
40-55-10-51345	RIVIERA MTCE HEALTH INSURANCE	5,470.86	5,470.86	26,063.00	20,592.14	20.99
40-55-10-51350	RIVIERA MTCE DENTAL INSURANCE	367.32	367.32	1,621.00	1,253.68	22.66
40-55-10-51355	RIVIERA MTCE VISION INSURANCE	.00	.00	5.00	5.00	.00
40-55-10-51360	RIVIERA MTCE RETIREMENT FUND	1,354.97	1,581.97	5,576.00	3,994.03	28.37
40-55-10-51370	RIVIERA MTCE DISABILITY INS	44.22	44.22	180.00	135.78	24.57

Account Number	Account Title	2026-26 Period Actual	2026-26 Current year Actual	Current year Budget	Variance Current year	% of Budget
40-55-10-51520	RIVIERA SOCIAL SECURITY	1,573.76	1,808.65	8,335.00	6,526.35	21.70
40-55-10-52210	TELEPHONE EXPENSE	568.99	568.99	1,500.00	931.01	37.93
40-55-10-52240	UPPER RIVIERA GAS HEAT	1,304.67	1,304.67	4,200.00	2,895.33	31.06
40-55-10-52260	UPPER RIV WATER & SEWER BILLS	.00	221.14	2,000.00	1,778.86	11.06
40-55-10-52400	UPPER RIVIERA REPAIRS	.00	.00	2,900.00	2,900.00	.00
40-55-10-53120	POSTAGE EXPENSE	.00	.00	.00	.00	.00
40-55-10-53160	PUBLICATIONS & PROMOTIONS	.00	.00	.00	.00	.00
40-55-10-53500	BLDG MAINT SUPPLIES-UPPER RIV	.00	.00	4,000.00	4,000.00	.00
40-55-10-53600	UPPER RIVIERA MAINTENANCE	4,878.56	4,878.56	9,200.00	4,321.44	53.03
Total UPPER RIVIERA:		36,557.26	40,393.01	174,619.00	134,225.99	23.13
LOWER RIVIERA CONCOURSE						
40-55-20-46790	RIVIERA CONCOURSE ELECTRIC	6,598.77	6,598.77	12,150.00	5,551.23	54.31
40-55-20-48200	RIVIERA CONCOURSE LEASES	.00	.00	120,172.00	120,172.00	.00
40-55-20-48230	RIVIERA PROMOTIONAL REVENUE	.00	.00	.00	.00	.00
40-55-20-48250	DONATIONS-FOUNTAIN	.00	3.75	1,350.00	1,346.25	.28
Total LOWER RIVIERA CONCOURSE:		6,598.77	6,602.52	133,672.00	127,069.48	4.94
LOWER RIVIERA CONCOURSE						
40-55-20-51200	LAKEFRONT SECURITY PD WAGES	73.56	283.51	36,000.00	35,716.49	.79
40-55-20-51520	LAKEFRONT SECURITY PD FICA	5.63	21.70	2,754.00	2,732.30	.79
40-55-20-52210	RIVIERA ELEVATOR PHONE EXPENSE	2,004.37	2,004.37	4,800.00	2,795.63	41.76
40-55-20-52260	LOWER RIV WATER & SEWER BILLS	.00	519.68	4,000.00	3,480.32	12.99
40-55-20-52400	LOWER RIVIERA REPAIRS	.00	.00	33,100.00	33,100.00	.00
40-55-20-53130	WORKERS COMP INSURANCE	.00	.00	2,000.00	2,000.00	.00
40-55-20-53140	LIABILITY & PROPERTY INSURANCE	.00	.00	9,450.00	9,450.00	.00
40-55-20-53500	BLDG MAINT SUPPLIES-LOWER RIV	833.66	833.66	8,000.00	7,166.34	10.42
40-55-20-53550	FOUNTAIN MAINT EXP	.00	.00	1,500.00	1,500.00	.00
40-55-20-53600	RIV MAINTENANCE SERVICE COSTS	4,568.96	4,568.96	15,000.00	10,431.04	30.46
40-55-20-53990	MISCELLANEOUS EXPENSES	201.98	201.98	500.00	298.02	40.40
40-55-20-58000	OUTLAY - RIVIERA EQUIPMENT	.00	.00	9,000.00	9,000.00	.00
40-55-20-59300	TRANSFER TO GENERAL FUND	.00	.00	771,534.00	771,534.00	.00
40-55-20-59350	TRANSFER TO CAPITAL PROJECTS	.00	.00	.00	.00	.00
Total LOWER RIVIERA CONCOURSE:		7,688.16	8,433.86	897,638.00	889,204.14	.94
RIVIERA PIERS AND DOCKS						
40-55-30-48210	RIVIERA DOCKS LEASES	.00	.00	160,105.00	160,105.00	.00
40-55-30-48220	BUOY & SLIP LEASES-RIVIERA	75,575.34	75,575.34	123,108.00	47,532.66	61.39
Total RIVIERA PIERS AND DOCKS:		75,575.34	75,575.34	283,213.00	207,637.66	26.68
RIVIERA PIERS AND DOCKS						
40-55-30-52220	PIER ELECTRIC	9,363.43	12,512.14	35,000.00	22,487.86	35.75
40-55-30-52640	PIER REPAIRS	.00	.00	45,000.00	45,000.00	.00
Total RIVIERA PIERS AND DOCKS:		9,363.43	12,512.14	80,000.00	67,487.86	15.64
RIVIERA MISCELLANEOUS						
40-55-40-49000	TRANSFER FROM TOURISM-GRANT	.00	.00	.00	.00	.00
Total RIVIERA MISCELLANEOUS:		.00	.00	.00	.00	.00

Account Number	Account Title	2026-26 Period Actual	2026-26 Current year Actual	Current year Budget	Variance Current year	% of Budget
RIVIERA MISCELLANEOUS						
40-55-40-53000	TOURISM GRANT FUNDS EXP	.00	.00	.00	.00	.00
Total RIVIERA MISCELLANEOUS:		.00	.00	.00	.00	.00
LAKEFRONT FUND Revenue Total:		590,764.62	597,702.36	1,772,235.00	1,174,532.64	33.73
LAKEFRONT FUND Expenditure Total:		90,915.37	102,907.22	1,779,267.00	1,676,359.78	5.78
Net Total LAKEFRONT FUND:		499,849.25	494,795.14	7,032.00-	501,827.14-	7,036.34-
Net Grand Totals:		499,849.25	494,795.14	7,032.00-	501,827.14-	7,036.34-

Account Number	Account Title	2026-26 Period Actual	2026-26 Current year Actual	Current year Budget	Variance Current year	% of Budget
LAKEFRONT FUND						
LAKEFRONT FUND						
40-00-00-48110	INTEREST INCOME	15,603.75	15,603.75	75,000.00	59,396.25	20.81
40-00-00-49100	APPL. PRIOR YR APPROPRIATIONS	.00	.00	100,000.00	100,000.00	.00
Total LAKEFRONT FUND:		15,603.75	15,603.75	175,000.00	159,396.25	8.92
BUOYS AND BOAT STALLS						
40-52-10-46750	BUOY/BOAT STALL WAITING LIST	.00	.00	.00	.00	.00
40-52-10-46755	KAYAK WAITING LIST	10.00	15.00	50.00	35.00	30.00
40-52-10-46760	BUOY/STALL LATE FEES	375.00	375.00	400.00	25.00	93.75
40-52-10-46770	BUOY & SLIP LEASES-CITY	186,107.26	187,248.19	200,000.00	12,751.81	93.62
40-52-10-46780	KAYAK RACK SPACE RENTAL	8,034.23	8,034.23	8,500.00	465.77	94.52
40-52-10-47250	DONATIONS - LAKEFRONT	.00	.00	.00	.00	.00
Total BUOYS AND BOAT STALLS:		194,526.49	195,672.42	208,950.00	13,277.58	93.65
BUOYS AND BOAT STALLS						
40-52-10-51100	HARBORMASTER SALARY	3,072.36	6,445.42	.00	6,445.42-	.00
40-52-10-51200	PIERS WAGES	.00	.00	.00	.00	.00
40-52-10-51340	HARBOR LIFE INSURANCE	.00	.00	.00	.00	.00
40-52-10-51360	HARBOR RETIREMENT EXP	.00	216.62	.00	216.62-	.00
40-52-10-51520	HARBOR SOCIAL SECURITY	235.03	486.56	.00	486.56-	.00
40-52-10-52110	PIER MAINTENANCE CONTRACT	.00	.00	50,000.00	50,000.00	.00
40-52-10-52640	BUOYS & BOAT STALLS-REPAIRS	.00	.00	65,000.00	65,000.00	.00
40-52-10-53140	LIABILITY & PROPERTY INSURANCE	14,538.74	14,538.74	19,385.00	4,846.26	75.00
40-52-10-53510	EQUIP MAINT SUPP-BUOYS,STALLS	.00	.00	2,000.00	2,000.00	.00
40-52-10-53980	WEST PIER REPLACEMENT FUND	.00	.00	50,000.00	50,000.00	.00
40-52-10-53990	BUOY/STALL MISC. EXPENSES	777.50	777.50	2,500.00	1,722.50	31.10
Total BUOYS AND BOAT STALLS:		18,623.63	22,464.84	188,885.00	166,420.16	11.89
BOAT LAUNCH						
40-52-11-46000	LAUNCH RAMP OVERAGE/SHORTAGE	.00	.00	.00	.00	.00
40-52-11-46750	LAUNCH PASS FEES	1,099.53	1,699.06	8,000.00	6,300.94	21.24
40-52-11-46760	BOAT LAUNCH RAMP INCOME	.00	.00	22,000.00	22,000.00	.00
40-52-11-46770	KAYAK LAUNCH INCOME	.00	.00	500.00	500.00	.00
Total BOAT LAUNCH:		1,099.53	1,699.06	30,500.00	28,800.94	5.57
BOAT LAUNCH						
40-52-11-51200	LAUNCH RAMP WAGES	.00	.00	17,500.00	17,500.00	.00
40-52-11-51520	LAUNCH RAMP SOC SEC	.00	.00	1,339.00	1,339.00	.00
40-52-11-52520	LAUNCH RAMP REPAIRS	.00	.00	2,000.00	2,000.00	.00
40-52-11-53520	LAUNCH RAMP MAINT SUPPLIES	.00	.00	500.00	500.00	.00
40-52-11-53990	LAUNCH RAMP MISCELLANEOUS	21.90	21.90	500.00	478.10	4.38
Total BOAT LAUNCH:		21.90	21.90	21,839.00	21,817.10	.10
BEACH						
40-54-10-43660	DNR LAKE PATROL GRANT	.00	.00	.00	.00	.00
40-54-10-43670	CLEAN BOATS CLEAN WATER GRANT	.00	.00	2,400.00	2,400.00	.00
40-54-10-46100	MISC BEACH REVENUE	.00	.00	.00	.00	.00
40-54-10-46730	BEACH REVENUE	17.06	17.06	565,000.00	564,982.94	.00
40-54-10-46735	BEACH REVENUE-VIPLY	.00	.00	.00	.00	.00

Account Number	Account Title	2026-26 Period Actual	2026-26 Current year Actual	Current year Budget	Variance Current year	% of Budget
40-54-10-46740	BEACH PASS RESIDENTS	6,405.07	7,238.15	24,000.00	16,761.85	30.16
40-54-10-46750	BEACH PASS - SEASONAL	.00	.00	2,000.00	2,000.00	.00
Total BEACH:		6,422.13	7,255.21	593,400.00	586,144.79	1.22
BEACH						
40-54-10-51100	HARBORMASTER WAGES	4,259.34	4,259.34	82,032.00	77,772.66	5.19
40-54-10-51200	BEACH MTCE WAGES	102.04	102.04	6,200.00	6,097.96	1.65
40-54-10-51250	BEACH MTCE OVERTIME WAGES	.00	.00	8,000.00	8,000.00	.00
40-54-10-51260	BEACH SEASONAL WAGES	250.85	250.85	97,000.00	96,749.15	.26
40-54-10-51340	BEACH MTCE LIFE INS	.34	.34	74.00	73.66	.46
40-54-10-51345	BEACH MTCE HEALTH INSURANCE	.00	.00	34,176.00	34,176.00	.00
40-54-10-51350	BEACH MTCE DENTAL INSURANCE	3.14	3.14	1,641.00	1,637.86	.19
40-54-10-51355	BEACH MTCE VISION INSURANCE	.00	.00	110.00	110.00	.00
40-54-10-51360	BEACH MTCE RETIREMENT FUND	7.35	7.35	7,023.00	7,015.65	.10
40-54-10-51370	BEACH MTCE DISABILITY INS	.00	.00	189.00	189.00	.00
40-54-10-51380	UNIFORMS	.00	.00	2,000.00	2,000.00	.00
40-54-10-51520	BEACH SOCIAL SECURITY	352.85	352.85	14,883.00	14,530.15	2.37
40-54-10-52210	BEACH TELEPHONE	51.72	51.72	500.00	448.28	10.34
40-54-10-52220	BEACH ELECTRIC	684.42	960.11	4,700.00	3,739.89	20.43
40-54-10-52640	LAKE SPRAYING	.00	.00	5,000.00	5,000.00	.00
40-54-10-53100	BEACH OFFICE SUPPLIES	1,698.94	1,698.94	5,000.00	3,301.06	33.98
40-54-10-53130	WORKER'S COMPENSATION INS	.00	.00	4,500.00	4,500.00	.00
40-54-10-53140	LIABILITY & PROPERTY INSURANCE	.00	.00	10,000.00	10,000.00	.00
40-54-10-53400	CALE OPERATING AND CC EXP	.00	.00	20,000.00	20,000.00	.00
40-54-10-53520	BEACH MAINTENANCE SUPPLIES	.00	.00	5,000.00	5,000.00	.00
40-54-10-53620	BEACH MAINTENANCE SERVICE COS	.00	.00	2,500.00	2,500.00	.00
40-54-10-53720	BEACH DREDGING	.00	.00	.00	.00	.00
40-54-10-53990	BEACH MISCELLANEOUS	.00	144.79	3,000.00	2,855.21	4.83
40-54-10-57200	WATER SAFETY PATROL	.00	.00	41,758.00	41,758.00	.00
40-54-10-57210	GLAKE LAW ENFORCEMENT AGENCY	.00	.00	.00	.00	.00
40-54-10-57300	GLAKE ENVIRONMENTAL AGENCY	11,250.00	11,250.00	45,000.00	33,750.00	25.00
40-54-10-57350	GENEVA LAKE LEVEL CORP	.00	.00	4,000.00	4,000.00	.00
40-54-10-57800	VENETIAN FESTIVAL FIREWORKS	.00	.00	10,000.00	10,000.00	.00
40-54-10-58000	OUTLAY - BEACH EQUIPMENT	.00	.00	2,000.00	2,000.00	.00
Total BEACH:		18,660.99	19,081.47	416,286.00	397,204.53	4.58
UPPER RIVIERA						
40-55-10-46740	UPPER RIVIERA REVENUE	288,191.94	292,547.39	305,000.00	12,452.61	95.92
40-55-10-46750	UPPER RIVIERA CATERING REV	2,746.67	2,746.67	42,000.00	39,253.33	6.54
40-55-10-46760	UPPER RIVIERA MISC REVENUE	.00	.00	500.00	500.00	.00
Total UPPER RIVIERA:		290,938.61	295,294.06	347,500.00	52,205.94	84.98
UPPER RIVIERA						
40-55-10-51200	RIVIERA MTCE WAGES	18,087.32	21,032.92	77,457.00	56,424.08	27.15
40-55-10-51250	RIVIERA MTCE OVERTIME	1,164.27	1,371.39	9,500.00	8,128.61	14.44
40-55-10-51260	RIVIERA EVENT STAFF WAGES	1,722.42	1,722.42	22,000.00	20,277.58	7.83
40-55-10-51270	RIVIERA EVENT STAFF WAGES	.00	.00	.00	.00	.00
40-55-10-51340	RIVIERA MTCE LIFE INSURANCE	19.90	19.90	82.00	62.10	24.27
40-55-10-51345	RIVIERA MTCE HEALTH INSURANCE	5,470.86	5,470.86	26,063.00	20,592.14	20.99
40-55-10-51350	RIVIERA MTCE DENTAL INSURANCE	367.32	367.32	1,621.00	1,253.68	22.66
40-55-10-51355	RIVIERA MTCE VISION INSURANCE	.00	.00	5.00	5.00	.00
40-55-10-51360	RIVIERA MTCE RETIREMENT FUND	1,354.97	1,581.97	5,576.00	3,994.03	28.37
40-55-10-51370	RIVIERA MTCE DISABILITY INS	44.22	44.22	180.00	135.78	24.57

Account Number	Account Title	2026-26 Period Actual	2026-26 Current year Actual	Current year Budget	Variance Current year	% of Budget
40-55-10-51520	RIVIERA SOCIAL SECURITY	1,573.76	1,808.65	8,335.00	6,526.35	21.70
40-55-10-52210	TELEPHONE EXPENSE	568.99	568.99	1,500.00	931.01	37.93
40-55-10-52240	UPPER RIVIERA GAS HEAT	1,304.67	1,304.67	4,200.00	2,895.33	31.06
40-55-10-52260	UPPER RIV WATER & SEWER BILLS	.00	221.14	2,000.00	1,778.86	11.06
40-55-10-52400	UPPER RIVIERA REPAIRS	.00	.00	2,900.00	2,900.00	.00
40-55-10-53120	POSTAGE EXPENSE	.00	.00	.00	.00	.00
40-55-10-53160	PUBLICATIONS & PROMOTIONS	.00	.00	.00	.00	.00
40-55-10-53500	BLDG MAINT SUPPLIES-UPPER RIV	.00	.00	4,000.00	4,000.00	.00
40-55-10-53600	UPPER RIVIERA MAINTENANCE	4,878.56	4,878.56	9,200.00	4,321.44	53.03
Total UPPER RIVIERA:		36,557.26	40,393.01	174,619.00	134,225.99	23.13
LOWER RIVIERA CONCOURSE						
40-55-20-46790	RIVIERA CONCOURSE ELECTRIC	6,598.77	6,598.77	12,150.00	5,551.23	54.31
40-55-20-48200	RIVIERA CONCOURSE LEASES	.00	.00	120,172.00	120,172.00	.00
40-55-20-48230	RIVIERA PROMOTIONAL REVENUE	.00	.00	.00	.00	.00
40-55-20-48250	DONATIONS-FOUNTAIN	.00	3.75	1,350.00	1,346.25	.28
Total LOWER RIVIERA CONCOURSE:		6,598.77	6,602.52	133,672.00	127,069.48	4.94
LOWER RIVIERA CONCOURSE						
40-55-20-51200	LAKEFRONT SECURITY PD WAGES	73.56	283.51	36,000.00	35,716.49	.79
40-55-20-51520	LAKEFRONT SECURITY PD FICA	5.63	21.70	2,754.00	2,732.30	.79
40-55-20-52210	RIVIERA ELEVATOR PHONE EXPENSE	2,004.37	2,004.37	4,800.00	2,795.63	41.76
40-55-20-52260	LOWER RIV WATER & SEWER BILLS	.00	519.68	4,000.00	3,480.32	12.99
40-55-20-52400	LOWER RIVIERA REPAIRS	.00	.00	33,100.00	33,100.00	.00
40-55-20-53130	WORKERS COMP INSURANCE	.00	.00	2,000.00	2,000.00	.00
40-55-20-53140	LIABILITY & PROPERTY INSURANCE	.00	.00	9,450.00	9,450.00	.00
40-55-20-53500	BLDG MAINT SUPPLIES-LOWER RIV	833.66	833.66	8,000.00	7,166.34	10.42
40-55-20-53550	FOUNTAIN MAINT EXP	.00	.00	1,500.00	1,500.00	.00
40-55-20-53600	RIV MAINTENANCE SERVICE COSTS	4,568.96	4,568.96	15,000.00	10,431.04	30.46
40-55-20-53990	MISCELLANEOUS EXPENSES	201.98	201.98	500.00	298.02	40.40
40-55-20-58000	OUTLAY - RIVIERA EQUIPMENT	.00	.00	9,000.00	9,000.00	.00
40-55-20-59300	TRANSFER TO GENERAL FUND	.00	.00	771,534.00	771,534.00	.00
40-55-20-59350	TRANSFER TO CAPITAL PROJECTS	.00	.00	.00	.00	.00
Total LOWER RIVIERA CONCOURSE:		7,688.16	8,433.86	897,638.00	889,204.14	.94
RIVIERA PIERS AND DOCKS						
40-55-30-48210	RIVIERA DOCKS LEASES	.00	.00	160,105.00	160,105.00	.00
40-55-30-48220	BUOY & SLIP LEASES-RIVIERA	75,575.34	75,575.34	123,108.00	47,532.66	61.39
Total RIVIERA PIERS AND DOCKS:		75,575.34	75,575.34	283,213.00	207,637.66	26.68
RIVIERA PIERS AND DOCKS						
40-55-30-52220	PIER ELECTRIC	9,363.43	12,512.14	35,000.00	22,487.86	35.75
40-55-30-52640	PIER REPAIRS	.00	.00	45,000.00	45,000.00	.00
Total RIVIERA PIERS AND DOCKS:		9,363.43	12,512.14	80,000.00	67,487.86	15.64
RIVIERA MISCELLANEOUS						
40-55-40-49000	TRANSFER FROM TOURISM-GRANT	.00	.00	.00	.00	.00
Total RIVIERA MISCELLANEOUS:		.00	.00	.00	.00	.00

Account Number	Account Title	2026-26 Period Actual	2026-26 Current year Actual	Current year Budget	Variance Current year	% of Budget
RIVIERA MISCELLANEOUS						
40-55-40-53000	TOURISM GRANT FUNDS EXP	.00	.00	.00	.00	.00
Total RIVIERA MISCELLANEOUS:		.00	.00	.00	.00	.00
LAKEFRONT FUND Revenue Total:		590,764.62	597,702.36	1,772,235.00	1,174,532.64	33.73
LAKEFRONT FUND Expenditure Total:		90,915.37	102,907.22	1,779,267.00	1,676,359.78	5.78
Net Total LAKEFRONT FUND:		499,849.25	494,795.14	7,032.00-	501,827.14-	7,036.34-
Net Grand Totals:		499,849.25	494,795.14	7,032.00-	501,827.14-	7,036.34-

City of Lake Geneva, Wisconsin
 Capital Improvement Program
 2026 thru 2029

**PROJECTS BY DEPARTMENT - CAPITAL PROJECTS (FUND 43)
 FUNDED BY CAPITAL BORROWING AND FUND BALANCE RESERVES**

Department	Account Number	2026	2027	2028	2029	TOTAL
Riviera Dumpster Encloser		190,000				190,000
Sea Weed Harvester Lagoon, L-Pier, Beach		125,000				125,000
Beach Block Wall Finish			65,000			65,000
Riviera Fountain Repairs			52,000			52,000
ADA Ramp			75,000			75,000
Beach Sun Canopies					60,000	60,000
Subtotal	43-40-00-17015	315,000	192,000	-	60,000	567,000
Library						
Roof replacement		180,000				180,000
Furniture Replacement		40,000				40,000
Window Replacement		25,000	25,000			50,000
Radon Mitigation System/HVAC System		200,000				200,000
Elevator/Lift for ADA Accessibility		200,000	-			200,000
Subtotal	43-99-00-17010	645,000	25,000	-	-	670,000
Museum						
Tuckpoint Chimney		15,000				15,000
Furnance		65,000				65,000
Flat Roof Replacement		100,000				100,000
Subtotal		180,000	-	-	-	180,000
Fire Department						
G2 Alerting System		179,000				179,000
Subtotal	43-22-00-17010	179,000	-	-	-	179,000
Police/Fire/DPW						
Radio Project-Radios(Partial Carryforward)		599,309				599,309
Boston Whaler Boat-Police (C/F 2026 Balance)		192,448				192,448
Subtotal	43-21-00-17010	791,757	-	-	-	791,757
Parks and Rec Capital Projects						
Playgrounds		242,500	300,000	300,000	300,000	1,142,500
3-Sisters' Statue-replacement			300,000			300,000
Vets Park Rental Pavilion w/Restrooms and Kitchen			1,300,000			1,300,000
Bike Trail Maintenance				200,000		200,000
Seasons Boardwalk Maintenance				80,000		80,000
Manning Way Bike Trail Bridge					85,000	85,000
Skate Park Maintenance					100,000	100,000
Disc Golf Trails, Baskets, Signs Maintenance					40,000	40,000

Mobility Aids



MobiChair- Floating wheelchair - \$2,349

MobiChair® is a high-quality floating beach wheelchair designed for use on sand, soft surfaces, and in the water. With specially engineered buoyant wheels and armrests, it provides safe, comfortable access to beaches and waterfront areas for wheelchair users, people with special needs, and children.

Portable, lightweight, and easy to maneuver, the MobiChair® is built for independence and leisure. Its rust-resistant frame withstands saltwater environments, and the floating design allows users to enjoy the ocean safely. Trusted by beach accessibility programs, resorts, and municipalities across the US for inclusive beach access.

- Unique floating wheels and armrests — usable in sand and water
- Suitable for beach, waterfront, and swimming pool environments
- Designed for wheelchair users, people with special needs, and children
- Non-allergenic, water-resistant and UV-resistant fabric
- Stable and well-balanced for safe maneuvering on soft sand
- Rubber pneumatic tires absorb shock on soft or hard sand
- 3 seat adjustment positions for personalized comfort
- Folds flat for easy storage — no tools required
- Waterproof back pocket
- Seat belt for added safety
- Can be used with a tethered rope for additional security in the water



Wheeleez Sandcruiser Dune Buster - \$3,998

The new **Sandcruiser® Dune Buster All-Terrain / Beach Wheelchair** glides smoothly over sand, grass/turf, mud, gravel, and small rocks. Special Balloon Wheels by Wheeleez™ are soft and pliable facilitating use on beaches, trails, sports fields and other challenging terrain. Let Sandcruiser® open a world of accessibility for your adventures! The **Sandcruiser® Dune Buster** model is specifically designed for those needing additional weight capacity. The weight limit of this model is 135 kg (298 lbs). Other benefits include additional floatation on soft sand and greater stability on sloped terrain for less stress and increased enjoyment.

- 4 Wheeleez™ 49cm Balloon Wheels provide extra payload capacity up to 135 kg (298 lbs.)
- Handle Extension Bar for increased leverage and improved handling.
- The frame is Electropolished, 316 Marine Grade Stainless Steel for good looks and maximum strength and durability. Other manufacturers don't utilize this unique process which leaves the frame prone to oxidation.
- Drop-nose frame connector pins ensure easy, no tool assembly/disassembly for hassle-free transport and storage. Conventional designs rely on nut & bolt fasteners requiring tools and additional time to assemble/disassemble.
- Adjustable leg rest with padded hinge protectors are standard equipment—no need to purchase costly upgrade options.
- For safety and stability, the Anti-tip / brake bar functions as a parking brake and prevents backward tipping. This system never needs adjusting.
- Padded, marine-grade acrylic canvas upholstery is UV stable and mold, rot, and saltwater resistant, unlike mesh fabrics, which can exacerbate pressure points. The Wheeleez™ upholstery is very smooth and comfortable.
- Adjustable seating tension is a Wheeleez™ exclusive.
- Adjustable, quick-release buckles enable quick upholstery removal for cleaning and storage.
- Padded armrests swing up, out of the way, to facilitate transfers.



Wheeleez All-Terrain/Beach Rollator - \$1,290

The Wheeleez™ All-Terrain Rollator is specifically designed to navigate all the challenging off-road terrains... soft sand, mud, gravel, grass, rocks, cobblestones (plus road and concrete). The wider Wheeleez™ polyurethane wheels allow you a safer more stable base to walk with, giving you added confidence to experience the great outdoors with ease.

The health benefits of exercising and physical therapy are well documented. Walking is key to promoting mobility, mental health, longevity and rehabilitation.



BOX Beach Bomber Wheelchair - \$6,100

For all of you adaptive surfers, beach bunnies, and trail blazers out there, BOX Wheelchairs is proud to present the **BOX Beach Bomber**. Built specifically for the beach or trail lifestyle, this chair has very unique features, including a one of a kind rear wheel design, 8" front creeper wheels as well as a high test vinyl bearing system, ensuring you'll never have to worry about rusted parts at the beach. You will also marvel at how surprisingly lightweight the Beach Bomber is! Not to mention, the Beach Bomber is also available with a **Trail Bomber kit**.

Standard Features Include:

- A BOX Beach Bomber frame, custom tailored to the user
- Bomber wheels with custom Off - Road Tires
- Creeper front wheels with off road custom tires
- Standard Upholstery
- Your Choice of 26 Different Powder coated Colors... Available in Solid, Metallic, Matte and even Polished finishes.

And like ALL Box Wheelchairs, the Beach Bomber is custom built from the ground up to your exact needs and desires...NOT built on a assembly line!

- All Box Wheelchairs come with a industry leading 10 year warranty on welded frames (500Lbs limit)

BOX Beach Bomber Chair Features:

- For the Sand, Dirt and Grass
- Lightweight, Durable Frame with Drain Holes
- Stainless Steel Bearings and Hardware >
- Oversized 10" Front Wheel and Tires
- Oversized 24 x 4.5 Rear Wheel and Tires

Water Access Matts



Roll-up Boat Ramp Lightweight AFX 10'x33' - \$3,569.00

The Mobi-Mat® Boat Ramp™ AFX is a lightweight roll-out launch mat designed for kayaks, canoes, jet skis, and small boat trailers. Easy to deploy and store, it provides a non-slip surface for safe watercraft launching on beaches, shorelines, and riverbanks.

The 10 ft wide coverage handles most small watercraft launches with ease. Made from durable, weather-resistant recycled materials, the AFX boat ramp withstands saltwater, UV exposure, and repeated use. Simply roll out at your launch site and secure — no construction or permanent installation required.

Mobi-Mat® Boat Ramp™ AFX is engineered for creating boat launches and accommodating light to medium vehicle traffic on supporting but unstable terrains — sand, grass, gravel, shorelines, banks, and lakes. The lightweight AFX matting provides reliable traction to wheeled vehicles while remaining pedestrian friendly.

- Lightweight design: only 0.27 lb/sqft — easy to handle and deploy
- Made of 100% recycled PET bottles — lab tested, long lasting and recyclable
- Safe innovative 3-D surface design provides traction to wheeled vehicles
- Withstands regular vehicle traffic at low speed
- Requires little to no maintenance under normal conditions
- Easy cleaning: blow with a leaf blower or sweep with a broom
- Available from 16.5 ft to 100 ft in connectable lengths

Pricing

10'x16.5' - \$1,909

10'x50' - \$4,819

10'x33' - \$3,569



Roll-up Boat Ramp Heavy Duty 16.5'x10' - \$2,369.00

The Mobi-Mat® Boat Ramp™ A2X is a heavy-duty roll-out mat engineered for building boat launches and supporting heavy vehicle traffic. Its patented grooves and ribs ensure tires maintain grip even in slippery conditions caused by silt and algae buildup after high water events.

Designed for permanent and semi-permanent installations, the A2X provides a reliable, non-slip surface for boat trailers, trucks, and emergency vehicles. Available in 3.25 ft, 6.5 ft, 10 ft, and 14 ft widths with custom lengths up to 150 ft. Trusted by municipalities, marinas, and state parks across the US for safe, durable boat launch access.

The Mobi-Mat® Boat Ramp™ A2X is the heavy-duty solution for boat launches and high-traffic vehicle access on challenging terrains. The patented grooves and ribs ensure superior grip even in slippery conditions caused by silt and algae buildup — making it the reliable choice for shorelines, riverbanks, reservoirs, and lakes. Trusted by utility companies and emergency response teams.

- Patented ribbed and grooved surface for superior grip in wet and silty conditions
- Supports heavy vehicles, trucks, and emergency response units
- Ideal for launching large trailered boats with ease
- Trusted by utility companies for reliable and secure access
- Fast setup: a 50 ft ramp can be installed in just 15 minutes by two people
- Facilitates vehicle access on riverbanks, reservoirs, lakes, and ponds
- Prevents tires from slipping on algae-covered or silt-laden surfaces

Pricing

10'x16.5' - \$2,369 10'x50' - \$6,799

10'x33' - \$4,639



Roll up walkway 3.25'x16.5' or 5'x16.5' - \$599-\$899.00

Mobi-Mat® AFX RecPath™ in Blue Jay is a portable, removable rollout beach access walkway featuring a distinctive blue color. Designed for beach accessibility programs, park pathways, and outdoor venues, this 5ft wide non-slip walkway provides ADA-compliant access over sand, grass, and gravel.

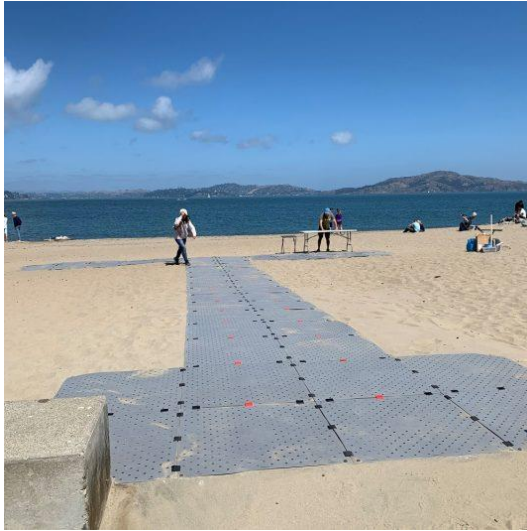
Made from 100% recycled PET bottles, it rolls out in minutes and anchors securely with stainless steel eyelets. Available in 5 ft and 6.5 ft widths and multiple lengths (16.5 ft to 100 ft). Lab tested for long-lasting durability with a weather-resistant construction that requires minimal maintenance.

Mobi-Mat® AFX RecPath™ is a portable, removable rollout beach access mat designed for pedestrians, wheelchair users, strollers, bicycles and light all-terrain vehicles. Available in connectable lengths from 16.5 ft to 100 ft for ultimate configurability. Provides a firm, safe, cool and stable surface for people with disabilities, the elderly, wheelchair users, mobility scooter riders, stroller users and all groups with special access needs.

- The #1 trusted brand of beach access matting worldwide
- Lab tested, long lasting and made of 100% recycled PET bottles
- Distinctive Blue Jay color — attractive and highly visible
- Safe innovative 3-D design stays cool in the sun
- Self-maintaining design — stays on top of sand at all times
- Simple ground anchoring with spikes through stainless steel eyelets
- Rapid 2-minute setup and pack-up time using Mobi-Roll 'N Stow®
- Easy cleaning: sweep or spray with a hose or pressure washer
- Life expectancy of 10+ years

Pricing

3.25'x16.5' - \$599	3.25' x 33' - \$1,155	5'x16.5' - \$899	5'x33' - \$1,775
3.25'x50' - \$1,585	3.25'x100' - \$2,885	5'x50' - \$2,399	5'x100' - \$4,409



Access Trax 3'x3' - 5 mats for \$385.00

- Durable, lightweight, foldable portable wheelchair access mats
- For mostly flat areas on terrain like sand, gravel, dirt, mulch & grass
- Works with mobility devices & heavy equipment (1,000s of lbs)
- Most families get 5-10 mats if using at the beach (can move mats)
- Use for long term or temporary access route
- Trusted by 80+ nonprofits globally & the Department of Veterans Affairs

Each Access Trax mat comes with:

- 1 – Mat 36 x 36 x 1/8 inch; 5.2 lbs (91.4 x 91.4 x 0.32 cm ; 2.35kg)
- 3 – Orange Hinges

Access Equipment

[KayaArm](#) - \$339.00

This compact and convenient device is easy to install and simple to use. This revolutionary new, stable way to launch your kayak from a dock device makes it safer to enter and exit your kayak. Getting into, launching, and getting out of a kayak has never been this easy.

Description

Easy in/out of your kayak. A single KayaArm is all you need to provide stabilization for launching your kayak from a dock, providing an easy launch of your kayak.

Many customers find that once they have a stable kayak launch with the KayaArm, they kayak more frequently.

This package below provides a stable kayak launch (one KayaArm), and the second KayaArm allows you to lift your kayak from the water and conveniently store it at the dock so it is ready to go at a moment's notice.

Why 2 KayaArms are better than one!

Don't like lifting your kayak from the water? Problem solved!

The KayaArm is also designed to be used for lifting your kayak from the water, kayak storage at the dock, as well as mounting on the garage, shed, or carport wall to provide for seasonal storage for your kayak.